



# Admission Brochure (2026-27)



**Gokhale Institute  
of Politics and  
Economics**  
(Deemed to be University)

**Undergraduate** and  
**Post Graduate** programmes





## Particulars

<b>Message from the Honourable Chancellor</b> .....	4
<b>Message from the Honourable Vice-Chancellor</b> .....	5
<b>Executive Council</b> .....	6
<b>Faculty Profile</b> .....	7
<b>Gokhale Institute of Politics and Economics (GIPE)</b> .....	12
<b>Programme:</b> .....	19
B.Sc. Economics (Honours) .....	20
B.Sc. Economics (Data Science) .....	23
M.A Economics .....	24
M.Sc. Economics .....	26
M.Sc. Economics (Agribusiness Economics) .....	27
M.Sc. Economics (Financial Economics) .....	28
M.Sc. Economics (Geopolitics and Geoeconomics) .....	30
M.Sc. Economics (International Business Economics and Finance) .....	31
M.Sc. Economics (Population Studies and Health Economics) .....	33
M.Sc. Economics (Public Policy) .....	35
Prerequisite Courses (Bridge Courses) .....	37
Post Graduate Programme in Financial Economics .....	38
<b>Admission Process (For B.Sc., M.Sc., M.A and PGPFE)</b> .....	39
<b>Eligibility Criteria and Selection Process</b> .....	40
<b>Reservation Policy and Supernumerary Quota</b> .....	46
Fees for First Year (Excluding Hostel Fees) / Important Dates .....	48
Cancellation of Admission and Refund Rules .....	49
Important Instructions .....	50
<b>Admission and Application Process for Hostel Amenities in the hostel rooms</b> .....	54
Hostel Admission, Cancellation and Refund .....	55
Hostel Rules .....	56
<b>Life at GIPE</b> .....	61
Facilities for students and student-led activities .....	62
Health, Counseling and Support Services .....	65
Student Committee Driving Excellence (Master Programmes) .....	66
<b>Fee Details (excluding hostel)</b>	
Annex I: Fee Structure for PG Programme .....	69
Annex II: Fee Structure for UG Programme .....	71
Annex III: Fee Structure for Hostel Admission .....	72
Annex IV: Educational Loan Assistance .....	75
Annex IV: Undertaking Forms .....	77



## Message from Honourable **Chancellor**

It is both an honour and a privilege, as Chancellor of the Gokhale Institute of Politics and Economics, to present the Admission Brochure for the academic year 2026–27.

Established in 1930 and inspired by the vision and ideals of the great nationalist thinker Gopal Krishna Gokhale, the Institute has stood for nearly a century as an icon of rigorous scholarship, intellectual freedom, and public purpose. Over the decades, it has nurtured generations of scholars, policymakers, and leaders who have contributed meaningfully to advancing economic and social development in India and beyond.

In an era marked by rapid global change, economic uncertainty, technological disruption, and pressing developmental challenges, the need for thoughtful analysis, evidence-based policymaking, and ethical leadership has never been greater. Institutions such as the Gokhale Institute play a crucial role in shaping minds that are capable not only of understanding these complex realities but also of responding to them with clarity, compassion, and courage.

At Gokhale Institute, learning goes far beyond the classroom. Students are encouraged to question assumptions, engage critically with ideas, and explore innovative solutions to real-world problems. Our distinguished faculty, vibrant research culture, and interdisciplinary environment provide an ideal platform for intellectual exploration and meaningful academic growth. It's an experiential learning blended with theory and practice, Analytics and empirical studies.

I warmly invite aspiring students who are driven by curiosity, commitment, and a desire to contribute to society to join this distinguished institution. Your journey at the Gokhale Institute will not merely be an academic pursuit; it will be an opportunity to cultivate insight, integrity, and a lifelong commitment to knowledge and public service.

As you step forward to shape your future, I wish you every success and look forward to welcoming the next generation of thinkers and leaders to the Gokhale Institute of Politics and Economics family.

Warm regards,

**Shri Sanjeev Sanyal**

Chancellor, Gokhale Institute of Politics and Economics, Pune



## Message from Honourable **Vice Chancellor**

Dear Aspirants,

It gives me immense pleasure to welcome you to Gokhale Institute of Politics and Economics (GIPE), an institution committed to excellence in research, teaching, innovation, and the holistic development of its students. Choosing a university is one of the most important decisions, and we are extremely delighted that you are considering our university as the stepping stone to your future.

At GIPE, we facilitate a vibrant academic environment that encourages critical thinking, creativity, and intellectual growth. Our diverse range of programmes in Economics and world-class faculty are designed to equip you with the knowledge and skills in the field of Economics for the modern era.

Our programmes go beyond traditional economics, equipping graduates with trans-disciplinary knowledge and technical skills in statistics, econometrics, data analysis and programming, as well as allied fields such as sociology, demography and political science. All the programmes offered here have a common significant core component, and it is the focus on quantitative methods that teach them to leverage data and statistics for real-world problem-solving.

Beyond academics, we are dedicated to nurturing well-rounded individuals by offering numerous opportunities in co-curricular activities, sports, cultural activities, and community engagement. We believe in empowering our students to become successful professionals and responsible citizens.

I invite you to explore the possibilities at GIPE and to join the community of learners, researchers, thinkers and change-makers.

We look forward to meeting you on our campus and to become the facilitator of your wonderful journey towards the dream destination.

Warm regards,

**Prof Umakant Dash**

Vice Chancellor, Gokhale Institute of Politics and Economics, Pune

## Executive Council

Sr No	Composition	Nature of Member	Name of Membership
1	Vice-Chancellor/ Chairperson	Ex-Officio	Prof. Umakant Dash
2	Nominee of the Sponsoring Society (SIS)	Member	
3	Nominee of the Sponsoring Society (SIS)	Member	Shri Ramakanta Lenka
4	Nominee of State Government of Maharashtra	Member	Dr. Ashutosh Raravikar
5	Two members from amongst the Deans of Schools	Member	Prof Jayanti Kajale (Dean of Faculty)
6	Two members from amongst the Deans of Schools	Member	Dr. Shiva Reddy (Dean of Students Affairs)
7	One representative shall be nominated by the commission	Member	Dr. Yugank Goyal
8	Nominee of State Government of Maharashtra	Member	Ex Officio (DG, Yashada)
9	One Professor	Member	Prof. Rabi Mishra
10	One Associate Professor	Member	Dr. Lalitagauri Kulkarni
11	Assistant Professor	Member	Dr. Santosh Phad
12	Offg. Deputy Registrar (Secretary)	Member	Dr. Vishal Gaikwad



## Faculty Profile

Sr. No.	Name of the Faculty Member	Designation	Specialization	Qualification
1	Amrish Bombade	Assistant Professor	Public Policy	M.A.(Public Administration), JRF-NET,SET
2	Amruta Suryavanshi	Assistant Professor	Agricultural Economics and Public Economics	Ph.D. (Economics)
3	Anurag Asawa	Professor	Mathematical Economics and Econometrics	Ph.D. (Economics)
4	Arjun	Assistant Professor	Macroeconomics, Public Economics, Econometrics, Development Economics and International Trade	Ph.D. (Economics)
5	Atreyee Sinha Chakraborty	Associate Professor	International Economics and Environmental Economics	Ph.D. (Economics)
6	Bal Govind Chauhan	Assistant Professor	Population Studies	Ph.D (Population Studies)
7	Bipin Nargide	Assistant Librarian	Library and Information Science	Ph.D. (LIS)
8	Dayakar Peddi	Assistant Professor	Agriculture Economics	Ph.D. (Economics)
9	Deepak Shah	Professor	Agricultural Economics	Ph.D. (Agriculture)
10	Dilip Kajale	Assistant Professor	Agricultural Economics, Market and Marketing of Agro Food and Supply Chain in Agriculture	Ph.D. (Agriculture)
11	Gurudas Nulkar	Professor	Sustainable Development, Ecological perspective of economic models	Ph.D (Industrial Sustainability and Environmental Management)

Sr. No.	Name of the Faculty Member	Designation	Specialization	Qualification
12	Jayanti Kajale	Professor	Agricultural Economics	Ph.D. (Economics)
13	K.S. Hari	Professor	Development Economics and Public Economics	Ph.D. (Economics)
14	K.S. Reddy	Associate Professor	Monetary Economics and Banking	Ph.D. (Economics)
15	Kailas Thaware	Professor	Financial Institutions, Forestry Economics and Co-operation	Ph.D. (Economics)
16	Kedar Naik	Assistant Professor	International Relations and Geopolitics	M.A. (Political Science), JRF NET
17	Lalitagauri Kulkarni	Associate Professor	Financial Economics	Ph.D. (Economics)
18	Mohit Kumar Shrivastav	Assistant Professor	Macroeconomics	Ph.D. (Economics)
19	Nanaji Shewale	Chief Librarian	Digital Library	Ph.D. (LIS)
20	Naresh Bodkhe	Professor	Law & Economics and International Economics	Ph.D. (Economics)
21	Neha Dhanawade	Assistant Professor	Statistics	Ph.D. (Statistics)
22	Pooja Thakur	Assistant Professor	International Economics and Econometrics	Ph.D. (Economics)
23	Prabhash N. Rath	Documentation Officer (Professor)	Bibliographical Control, Knowledge Organization, Research Methodology, Research and Publication Ethics	Ph.D. (LIS)
24	Pradeep Kamble	Assistant Professor	Public Finance	Ph.D. (Economics)
25	Prakash Vhankhade	Associate Professor	Agriculture Economics	Ph.D. (Economics)
26	Prashant Bansode	Professor	Sociology of Agrarian Society, Marginalized Groups and Social Movements	Ph.D. (Sociology)
27	Prema Borkar	Assistant Professor	Agricultural Economics	Ph.D. (Agriculture)
28	Rabi Narayan Mishra	RBI Chair Professor	Finance	Ph.D. (Economics)



Sr. No.	Name of the Faculty Member	Designation	Specialization	Qualification
29	Ramanathan Venkateswaran	Professor of Practice	Computer Science	Ph.D (Computer Science)
30	Ranjit Pattnaik	Visiting Professor	Macroeconomics	Ph.D. (Economics)
31	Rimli Basu	Assistant Professor	International Relations and Geopolitics	Ph.D. (International Relations)
32	Sankalp Gurjar	Assistant Professor	Geopolitics, Geo-economics and International Relations	Ph.D. (International Relations)
33	Santosh Phad	Assistant Professor	Demography, Health Data Analytics, and Statistical Methods & Techniques	Ph. D.(Population Studies)
34	Savita Kulkarni	Assistant Professor	Development Economics and Experimental Economics	Ph.D. (Economics)
35	Saylee Jog	Assistant Professor	Micro Economics and Urban Economics	Ph.D. (Economics)
36	Sourav Mohanty	Assistant Professor	Environmental Economics and Urban Economics	Ph.D. (Economics)
37	Suddhasil Siddhanta	Assistant Professor	Demography, Environment and Resources Economics, Development Economics, Spatial Economics, Econometrics and Microeconomics	Ph.D. (Economics)
38	Vini Sivanandan	Assistant Professor	Demography	Ph. D. (Population Studies)







**Gokhale Institute  
of Politics and  
Economics**  
(Deemed to be University)



## Gokhale Institute of Politics and Economics (GIPE)

Gokhale Institute of Politics and Economics (GIPE), Pune, was established in 1930 by the Servants of India Society (SIS). It is the oldest research and training institute in Economics in the country. It is dedicated to research into the socio-economic dimensions of Indian society and carries forward the legacy of Gopal Krishna Gokhale, who founded the Servants of India Society in 1905. His rationale was to promote education and develop capabilities among Indians to govern a newly independent nation. Over the decades, the Institute has established strong credentials in empirical and analytical research. In recognition of its contribution to higher learning and research in Economics, the Institute was awarded the status of an institution deemed to be a University in 1993. Gokhale Institute's students are groomed through a rigorous curriculum that blends strong theoretical foundations with hands-on, applied learning. They gain ongoing exposure to real-world projects, advanced analytics, and industry-linked assignments, sharpening their analytical and decision-making capabilities.

Gokhale Institute nurtures well rounded individuals by integrating soft skills - writing, communication, etiquette and professionalism with rigorous academic training. A Sweet Blend of "Good Human Beings" and "Efficient Workers" – Gokhale Institute's students are best suited to contribute tangibly across the Spaces of Consulting, Finance, Analytics, Research, and policy-making roles from Day One.

*The objectives of the Institute comprise two broad paths – research and teaching.*

### **(a) Research:**

The Institute's thrust areas of research are agricultural economics, rural development and cooperation, population studies, input-output studies for planning development, monetary economics and finance, public economics, and international economics. The institute houses research centres viz the Agro Economic Research Centre (AERC), the Population Research Centre (PRC), the Centre for the Study of Social Inclusion, the Centre for Behavioural Economics (CBE), the Input-Output Research Association (IORA), the Centre for Health Policy and Systems (CHPS), the Centre for Excellence in Entrepreneurship and Development, the Centre for Sustainable Development (CSD), and the Centre for Transformative Rural Action and Policy (C-TRAP).

### **(b) Teaching:**

Gokhale Institute of Politics and Economics offers a comprehensive range of specialized programmes in economics, catering to students at every educational level.



The academic programmes offered are

- B.Sc. Economics (Honours)
- B.Sc. Economics (Data Science)
- M.A. Economics
- M.Sc Economics
- M.Sc. Economics (Financial Economics)
- M.Sc. Economics (Agribusiness Economics)
- M.Sc. Economics (International Business Economics and Finance)
- M.Sc. Economics (Population Studies and Health Economics)
- M.Sc. Economics (Public Policy)
- M.Sc. Economics (Geopolitics and Geo-economics)
- Post Graduate Programme in Financial Economics (PGPFE)
- PhD in Economics, Agricultural Economics, Demography, Economic Sociology and Law and Economics

**(c) Reasons to Study Economics:**

- **Understanding Decision-Making:** Economics provides insights into how individuals, businesses, and governments make choices about resource allocation, helping to predict and influence behaviour.
- **Real-World Relevance:** It equips the students with the tools to analyse pressing issues like inflation, unemployment, inequality, and economic growth.
- **Versatile Career Opportunities:** Economics is highly valued in fields like finance, consulting, policy-making, and, of course, research
- **Critical Thinking and Problem-Solving:** It fosters analytical skills and the ability to approach complex problems systematically, using data and logical reasoning.
- **Global Perspective:** Economics helps you understand the interconnections between global markets and the implications of international policies and trade.

**(d) Why GIPE?**

- **Balanced Curriculum:** GIPE offers a unique blend of theoretical knowledge and practical application, ensuring students are well-prepared for real-world challenges.
- **Focus on Problem-Solving:** With a strong emphasis on experiential learning, students develop critical problem-solving skills essential for success in diverse fields.
- **Expert Faculty:** GIPE's faculty members are highly skilled researchers, providing students with valuable mentorship and insights into cutting-edge academic and corporate research.

- **Diverse Career Pathways:** The institute equips students to excel in academics, the corporate sector, and research-oriented roles, offering versatile career opportunities.
- **Industry and Research Integration:** GIPE's curriculum bridges the gap between academia and the corporate world, fostering a deep understanding of both theory and practice.
- **Gokhale Institute reflects the spirit of 'mini India',** bringing together a diverse cohort of exceptional talent from across the country.

Students are enrolled through strong and strict Admissions Procedures across all these inter-disciplinary PG Programmes in Economics and a four-year UG Economics Programme. Each PG batch typically comprises 50-60 students across all the above eight Economics programmes. The batch represents diverse academic backgrounds and multiple states and union territories of India. Each cohort is groomed as a balance of academic excellence, analytical aptitude, and industry orientation.

**Holistic Development:** The institute nurtures analytical thinking, creativity, and adaptability, empowering students to thrive in a rapidly changing global environment

#### **(e) Facilitation of Career Opportunities**

There is a Placement and Internship Committee of the Faculty, which guides the Placement and Internship Implementation Cell, consisting of students. Students are given specialised orientation training by well-known HR Experts and Career Counsellors to remain "Capable to Add Value" wherever they are selected for work. Gokhale Institute has thus created a strong and consistent placement record across the macro-financial space, notably in consulting, BFSI, analytics, research, policy, and corporate sectors. Past Recruiters have valued GIPE graduates for their analytical rigour, domain knowledge, and ability to adapt quickly to professional roles and to be absorbed into their Teams with reasonable compensation. - Highest CTC: ₹24 LPA - Average CTC: ₹11 LPA - Median CTC: ₹9.5 LPA. Placement rate remains consistently high across the various Economics programmes and are chosen to be placed in roles such as Economist, Data Analyst, Business Analyst, Consultant, Risk Analyst, Strategy Makers and Research Associates. The Placement Cell ensures structured coordination and smooth engagement throughout the recruitment process. A significant number of students from Gokhale Institute of Politics and Economics also pursue higher education in India and abroad, often supported by prestigious scholarships and fellowships. The faculty plays a pivotal role in this process by mentoring students, providing academic guidance, and offering strong letters of recommendation. After completing their advanced studies, many graduates build distinguished careers in academia, teaching, and research. The Institute's strong emphasis on research orientation equips students with the analytical rigour and intellectual foundation needed to transition smoothly into these demanding and impactful professional paths.



### **(f) Internships**

Internship is an Official Tool of Experiential Learning at GIPE and an integral component of its academic structure. Students (First Year PG and Third Year UG), as a part of their evaluation system, undertake internships across consulting firms, financial institutions, analytics companies, government bodies, policy think tanks, and research organisations. Internship roles span data analysis, financial analysis, policy research, consulting support, and applied economic research. Summer internship duration: 8 weeks (May–June). A significant proportion of students receive paid internships, with several receiving Pre-Placement Offers (PPOs). Highest internship stipend: ₹2 Lakhs; Average internship stipend: ₹60,000. These engagements enable students to apply classroom learning to real-world problems and enhance professional readiness.

### **(g) Facilities**

#### **Library and Reading Rooms**

The Dhananjayrao Gadgil Library, established in 1905, serves both GIPE and the public, housing one of India's largest social science collections with over 285,000 documents, including rare books, journals, and government reports. Fully computerised, the library offers online access to its catalogue and digital repository, including bibliographical and statistical databases, providing reading rooms, inter-library loans, and monthly bulletins. Open to students, scholars, and researchers globally, it blends historical collections with modern digital resources.

The presence of reading rooms within the library building makes the learning environment more conducive to going beyond the textbooks.

Presence of Research Centres creates a unique research-oriented learning environment. GIPE's research centres, funded by the government and private grantors, offer exceptional learning and internship opportunities for students. As the research centres are actively conducting research in policymaking, students have a unique opportunity to access high-quality research, data, and publications produced by these centres, which can enhance their learning and deepen their understanding of complex policy issues.

#### **Academic Events**

Due to the presence of so many research centres and its legacy in research, the institute frequently hosts events such as International and National conferences and seminars featuring prominent economists, professionals, and practitioners from different fields, enhancing academic engagement and providing students with real-world insights. Over the years, GIPE has hosted a series of events for students, featuring distinguished scholars and eminent speakers from their respective fields at regular intervals. Gokhale Institute believes that such conferences, workshops and interactive sessions are pivotal in students' academic journey and a significant forum for the Institute's research engagement with the economics profession at large.

### **Student exchange programme / National and International Conferences**

Gokhale Institute facilitates students selected for the Students Exchange Programme/ Participation in National/International Conferences / Earn and Learn Schemes, and academic workshops and activities with Corporations and multinational companies.

### **Hostels, Mess and Cafeteria**

The GIPE residential campus includes three hostels (with limited capacity), two of which are for girls. Hostels provide amenities such as Wi-Fi and solar hot water, ensuring a comfortable living experience. Students actively engage in cultural and sports activities, contributing to a dynamic hostel life. Expansion plans are set for the institute's centenary in 2030. A central mess and cafeteria serve healthy, delicious food for students and staff.

### **Health Centre**

The Health Centre, situated inside the residential campus provides essential healthcare services to students, ensuring timely medical attention and support. The institute also offer mental health counselling for students to cope with anxiety, depression and mental stress.

### **Seminar Halls, Reading Halls, Conference Rooms and Classrooms**

GIPE's academic campus features modern seminar halls, conference rooms, and classrooms equipped with state-of-the-art technology for both in-person and virtual learning. The stress-free learning environment fosters active participation, independent learning, and student engagement. Regular assessments ensure a fulfilling and effective learning experience.

### **Computer lab**

The lab is a multipurpose workspace that supports teaching, learning, and research for faculty and students. The Research Commons, with over 40 machines, provides students with open access for collaborative work.

### **Programming software and Datasets**

GIPE provides students with access to a wide range of programming software, including Stata, SQL, Python, and R, along with extensive datasets, enabling hands-on learning and practical data analysis experience.

### **Gymnasium and sports facilities**

GIPE offers a well-equipped gymnasium and sports facilities, promoting physical fitness and well-being. There are facilities for a basketball court, a volleyball court, and a badminton court.

**(h) Central Government / State Government Scholarship:**

Students who wish to apply for a scholarship (Central Government/State Government) after confirmation of admission to a programme are advised to visit the web page <https://gipe.ac.in/scholarships/national-scholarship/> in the "Scholarship" section for more details. The links to various portals are given on that web page.







## Under Graduate **4 –Year Programmes**

## B.Sc. Economics (Honours):

The B.Sc. (Economics) programme at the Gokhale Institute of Politics and Economics (GIPE) offers a rigorous undergraduate education grounded in economic theory, quantitative methods, data analytics, and applied policy analysis. This NEP 2020-compliant programme is designed with a progressive structure that builds strong analytical depth, empirical competence, and interdisciplinary understanding of economic and social issues. The curriculum of this programme covers core areas such as microeconomics, macroeconomics, statistics, mathematical economics, and econometrics. Alongside, students are exposed to accounting, finance, sociology, economic geography, database management systems, and communication skills, ensuring a well-rounded academic foundation.

The distinctive feature of the programme is its strong quantitative and data-oriented focus. From the early semesters, students receive hands-on training in statistical and econometric tools using STATA/SPSS, R, Python, spreadsheets, and database management systems. Advanced courses in multivariate analysis, business analytics, and panel data and time-series econometrics, along with analytics-based project work, prepare students to engage with real-world datasets and policy-relevant questions. The four-year undergraduate structure offers flexible academic pathways, including Honours and Honours with Research, supported by internships, supervised research, and project-based learning. An outcome-based, student-centric pedagogy emphasises critical thinking, problem-solving, teamwork, and effective communication, preparing graduates for higher studies, research, competitive examinations, and diverse careers in policy, finance, analytics, consulting, and the development sector.

### Multiple Entry and Exit Options (Aligned with National Education Policy 2020)

- Exit After 1<sup>st</sup> Year: B.Sc. Certificate in Economics
  - Exit After 2<sup>nd</sup> Year: B.Sc. Diploma in Economics
  - Exit After 3<sup>rd</sup> Year: B.Sc. Degree in Economics
  - 4<sup>th</sup> Year: Two options
- A. B.Sc. Economics (Honours) - with Specialisation
- B. B.Sc. Economics (Honours with Research) - for students achieving a CGPA of 7.5 or above

### Key Features of the Programme

Strong foundation in economic theory and practice.

Interdisciplinary learning with courses in economics, statistics, finance, and other fields.

- Skill and value-added courses for holistic development.
- Emphasis on research, with the opportunity to focus on research projects in the final year.



- **Mandatory Summer Internship (4 credits):** Gain hands-on experience through a 90-hour, 8-week internship.
- **Ability Enhancement Courses (AECs) and Skill Enhancement Courses (SECs)** for personal and professional growth.
- Specialisation options in areas like **Financial Economics, Development Economics and International Business** in the final year

Option for honours students to engage in specialized research in their final year.

	1st Year	2nd year	3rd Year
<b>Major</b>	Introduction to Calculus for Economics, Principles of Microeconomics, Principles of Macroeconomics	Intermediate Microeconomics, Introduction to Econometrics, Intermediate Macroeconomics, Intermediate Econometrics (with STATA/R/SPSS/Python), International Trade: Pure Theory	Indian Public Finance, Development Economics, Strategy and Game Theory, Introduction to Energy and Environment Economics, Indian Economy, Multivariate Analysis

	1st Year	2nd year	3rd Year
<b>Minor</b>	Introduction to Statistics (STATA/SPSS), Basic Financial Methods, Principles of Economics, Intermediate Statistics (with STATA/SPSS/Python)	Introduction to R Language Accounting and Financial Statement Analysis Money Banking & Financial Markets, Database Management System	The Interplay of Economic Theory and Data, Urban Economics, Behavioural Economics, Introduction to Sociology Academic Writing Decision Making

	1st Year	2nd year	3rd Year
<b>Multi-disciplinary</b>	Indian Film Music and Indian Drama, Intermediate Calculus for Economics	Operations Research	None

	1st Year	2nd year	3rd Year
<b>Ability Enhancement</b>	Language Course	Language Course	Language Course

	1st Year	2nd year	3rd Year
<b>Skill Enhancement</b>	Communication Skills and Public Speaking, Introduction to Cost and Management Accounting	Socio-Economic Supervised Learning	-

	1st Year	2nd year	3rd Year
<b>Value Added</b>	Yoga & Mental Wellness, Indian Knowledge system	-	-

**Specialisations Available (4th year):**

- Financial Economics
- International Business Economics and Finance
- Development Economics
- Agribusiness Economics
- Population Studies and Health Economics
- Public Policy
- Geopolitics and Geo-economics

**Research Honours (4th year):**

Students pursuing B.Sc. Economics with research will be engaged in a specialised course which includes Research Methodology, Research Design and Sampling, Research Ethics and Qualitative Research. It will help them be ready to pursue a PhD in their respective domain. The same is also supported by a 12-credit undergraduate research dissertation.





## ■ B.Sc. Economics (Data Science)

The **B.Sc. Economics (Data Science) with AEDP** is a future-oriented undergraduate programme that blends core economic theory with modern data science and analytics. Aligned with the **National Education Policy (NEP) 2020**, this four-year programme is designed to develop graduates capable of analysing complex economic problems using computational and data-driven approaches. By integrating economics with programming, statistics, and artificial intelligence, the programme prepares students to operate effectively in an increasingly digital and data-intensive economic environment.

The curriculum emphasises applying theoretical knowledge to real-world economic and business contexts, enabling students to generate evidence-based insights for policy formulation, strategic decision-making, and economic planning. The apprenticeship-embedded structure ensures that learning extends beyond the classroom, fostering professional competence and industry readiness.

### **Multiple Entry and Exit Options (Aligned with National Education Policy,2020):**

- Exit After 1<sup>st</sup> Year: B.Sc. Certificate in Economics (Data Science)
- Exit After 2<sup>nd</sup> Year: B.Sc. Diploma in Economics (Data Science)
- Exit After 3<sup>rd</sup> Year: B.Sc. Degree in Economics (Data Science)
- 4<sup>th</sup> Year: B.Sc. Economics (Data Science) with Apprenticeship

### **Key Features of the Programme:**

- **Interdisciplinary Curriculum:** Combines rigorous economic theory with data science tools, including R and Python programming, database management systems, machine learning, artificial intelligence, and Generative AI.
- **NEP 2020 Aligned Structure:** Designed in accordance with NEP 2020, offering flexibility, skill orientation, and a strong emphasis on employability.
- **Apprenticeship-Embedded Learning:** Includes a one-year industry apprenticeship (40 credits) in the final year, providing sustained on-the-job training and real-world exposure.
- **Strong Industry Relevance:** Bridges the gap between academic learning and industry expectations by focusing on practical applications in economics and data analytics.
- **Comprehensive Skill Development:** Builds strong quantitative reasoning, computational skills, and effective communication abilities.
- **Enhanced Employability:** Prepares graduates for careers in finance, market research, public policy, business analytics, and related domains, with hands-on industry experience as a key advantage.
- **Industry-Ready Graduates:** Produces professionals capable of applying economic reasoning and data science techniques to address contemporary economic and organisational challenges.

## Post Graduate Programmes:

From the academic year 2026–27, Gokhale Institute of Politics and Economics (GIPE) will transition to a NEP-compliant postgraduate programme structure across all its eight PG programmes. The revised framework aligns with the principles of the National Education Policy 2020 by introducing a Major-based curriculum design, along with provisions for Open Electives, interdisciplinary learning opportunities, and greater academic flexibility.

This section outlines the distinctive features of each programme, highlighting their thematic focus and the structure of courses offered under the revised framework. The aim is to provide clarity on the academic pathways available to students while maintaining the disciplinary strengths of each programme.

The detailed course structures presented here are provisional and are subject to approval by the forthcoming meetings of the Board of Studies (BoS) and the Academic Council (AC). Further refinements may be incorporated following these approvals.

### ■ M.A. Economics

The Master of Arts in Economics is a two-year, full-time postgraduate programme that provides students with rigorous training in economic theory, quantitative methods, and research techniques. The distinguishing feature of the programme is its unique interdisciplinary approach. It integrates core economic theories with vital social science subjects such as political science and economic sociology.

The curriculum offers students a comprehensive understanding of the dynamics of the market economy and state functioning through courses like the Political Development of the Indian Economy, Public Policy and Administration, and the Indian Political System. The Research Methodology course further equips students with both quantitative and qualitative research techniques. Additionally, hands-on exposure to data analytical tools such as Microsoft Excel, R programming, and Python sharpens their research acumen. Training in quantitative disciplines—including statistics, mathematics, econometrics, and business analytics—provides students with a competitive edge in an increasingly data-driven job market. With a curriculum consisting of sixteen compulsory and four elective courses, the programme is specifically designed to help students succeed in the Civil Services, competitive exams, or specialized roles in academia and the development sector.



## Course Structure

Major and Compulsory	Major
<ul style="list-style-type: none"> <li>• Microeconomics</li> <li>• Macroeconomics</li> <li>• Statistics and Operation Research</li> <li>• Basic Econometrics</li> <li>• Business Analytics</li> <li>• Research Methodology</li> <li>• OJT (On Job Training) / Internship</li> <li>• Research Project Economics</li> </ul>	<ul style="list-style-type: none"> <li>• Mathematics For Economics</li> <li>• Economic Growth and Development</li> <li>• International Economics</li> <li>• Political Economy of India's Development</li> <li>• Environmental Economics</li> <li>• Money Banking and Financial Markets</li> <li>• Indian Economy with Data</li> <li>• Indian Agricultural</li> <li>• Urban Economics</li> <li>• Public Policy and Administration</li> <li>• Economic Sociology</li> </ul>

### OE (Open Elective) / Elective

<ul style="list-style-type: none"> <li>• International Economics</li> <li>• Public Economics</li> <li>• Causal Inference Models and Applied Econometrics</li> <li>• Economics of Labour</li> <li>• Population Studies</li> <li>• Financial Institutions and Markets</li> <li>• Accountancy and Financial statement analysis</li> <li>• Indian Political System</li> <li>• Institutional Economics</li> <li>• Public Policy and Administration</li> <li>• International Relations</li> <li>• One SWAYAM Course (AI, Machine Learning)</li> <li>• Process reforms for governance and development</li> <li>• Insurance Economics</li> <li>• Quantitative Aptitude</li> <li>• Advanced Microeconomics</li> <li>• International Economic Institutions</li> <li>• Insurance Economics (Advanced Practices)</li> <li>• Dynamics of new age financial system: Emerging risks and the move towards resilience</li> <li>• Zero Credit courses : Disaster Management, Indian Constitution, Environmental Sustainability and Corporate ESG</li> </ul>
---

## ■ M.Sc. Economics

The M.Sc. Economics programme at the Gokhale Institute of Politics and Economics is distinguished by its strong theoretical foundations, analytical rigour, and an orientation towards research and policy-making. The programme offers an integrated and contemporary curriculum that combines rigorous economic theory with advanced quantitative and empirical training. Its unique strength lies in the balanced coverage of core courses like microeconomics, macroeconomics, statistics, and econometrics, extending to advanced applications including time series, panel data, and applied policy analysis. The programme provides a wide range of compulsory and elective courses, such as development economics, public economics, international trade, behavioural economics, environmental economics, law and economics, and business analytics, allowing students to tailor the learning pathways to their academic and career interests.

A key USP of the programme is its strong emphasis on hands-on training in data analysis and quantitative methods, including software such as R and Python. This equips students to work with real-world data and develop robust research and analytical skills. The pedagogy is interactive and student-centric, focusing on critical thinking, group work, analytical assignments and continuous assessment. With strong exposure to theory, research methods, and applied projects, graduates are well prepared to pursue a doctoral degree, take competitive examinations like the Indian Economic Services, pursue roles in academia, and engage in financial and analytical roles, as well as evidence-based decision-making in the public and private sectors.

Course Structure	
Major and Compulsory	Major
<ul style="list-style-type: none"> <li>• Microeconomics</li> <li>• Macroeconomics</li> <li>• Statistics and Operation Research</li> <li>• Basic Econometrics</li> <li>• Business Analytics</li> <li>• Research Methodology</li> <li>• OJT (On Job Training) / Internship</li> <li>• Research Project</li> </ul>	<ul style="list-style-type: none"> <li>• Economic Growth and Development</li> <li>• Advanced Microeconomics</li> <li>• International Economics: Theory and Policy</li> <li>• Financial Economics</li> <li>• Advanced Econometrics</li> <li>• Public Economics</li> <li>• International Economics: Money and Finance</li> </ul>



#### OE (Open Elective) / Elective

- Mathematics For Economics
- Accountancy and Financial Statement Analysis
- Process Reforms for Governance and Development
- Indian Agricultural Economics
- Indian Economy with Data
- Political Economy of India's Development
- Economic Sociology
- Urban Economics
- Behavioural Economics
- Monetary Macroeconomics
- Industry: Structure and Organisation
- Labour Economics
- Transport Economics
- Financial Institutions and Markets
- Social Exclusion and Inclusive Policy
- Linear Economics I
- Linear Economics II
- Insurance Economics
- Strategic Finance and Investment Banking
- Economics of Banking
- Dynamics of new age financial system: Emerging risks and the move towards resilience
- Causal Inference Models and Applied Econometrics
- One SWAYAM Course (AI, Machine Learning)
- Zero Credit courses : Disaster Management, Indian Constitution, Environmental Sustainability and Corporate ESG

### ■ M.Sc. Economics (Agribusiness Economics)

The M.Sc. Economics (Agribusiness Economics) programme is designed to develop economists with strong policy insight, quantitative rigour, and a spatial understanding of agri-food systems. The curriculum combines core economic theory with advanced training in quantitative methods and data visualisation, alongside domain expertise in agricultural policy, finance, risk management, supply chains, and international agricultural trade. Students gain hands-on experience with industry-standard tools such as STATA, R, and Python, enabling them to conduct rigorous empirical analysis using real-world data.

A central focus of the programme is evidence-based policy evaluation, equipping students to identify the causal impacts of policies, market reforms, and institutional interventions across regions and agro-ecological contexts. By integrating quantitative analysis with spatial perspectives, the programme prepares graduates to examine regional disparities, market integration, and dynamics of agricultural productivity. Graduates are well prepared for careers in policy think tanks, research organisations, corporate agribusiness, consulting, financial institutions, and government agencies, as well as for advanced research and doctoral studies.

<b>Course Structure</b>	
<b>Major and Compulsory</b>	<b>Major</b>
<ul style="list-style-type: none"> <li>• Microeconomics</li> <li>• Macroeconomics</li> <li>• Statistics and Operation Research</li> <li>• Basic Econometrics</li> <li>• Business Analytics</li> <li>• Research Methodology</li> <li>• OJT (On Job Training) / Internship</li> <li>• Research Project</li> </ul>	<ul style="list-style-type: none"> <li>• Mathematic for Economics Analysis</li> <li>• Microeconomics II</li> <li>• Economic Growth and Development</li> <li>• Mathematic for Economics Analysis</li> <li>• Agricultural Policy Framework in India</li> <li>• Agricultural Risk Management and Insurance</li> <li>• Strategic Agro-Food Marketing</li> <li>• Environmental Economics</li> <li>• Supply Chain in Agriculture</li> <li>• Agricultural Finance</li> <li>• International Trade in Agriculture</li> <li>• Supply Chain in Agriculture</li> <li>• Agricultural Finance</li> </ul>
<b>OE (Open Elective) / Elective</b>	
<ul style="list-style-type: none"> <li>• Financial Economics/ Com-modities and Commodity Derivatives</li> <li>• Causal Inference Models and Applied Econometrics</li> <li>• Remote Sensing and GIS</li> <li>• One SWAYAM Course (AI, Machine Learning)</li> <li>• Financial Economics/ Com-modities and Commodity Derivatives</li> <li>• Causal Inference Models and Applied Econometrics</li> <li>• Remote Sensing and GIS</li> </ul>	

### ■ **M.Sc. Economics (Financial Economics)**

The two-year M.Sc. in Economics (Financial Economics) programme provides rigorous training in economic theory, quantitative methods, and applied finance, with a strong emphasis on developing analytical and critical skills. The curriculum integrates data analysis, financial econometrics, data visualisation, and machine learning, providing hands-on exposure to industry-standard tools such as Python, R, Microsoft Excel and other econometric software. This multidisciplinary approach equips students with the technical and analytical capabilities required to address complex challenges in contemporary financial markets.

The programme places significant emphasis on applied financial economics, with comprehensive training in corporate valuation models and an in-depth understanding of the pricing and valuation of financial derivatives and fixed-income instruments. Designed in alignment with the Institute's academic philosophy, the curriculum combines theoretical rigor with real-world applications and consists of sixteen compulsory courses



and four elective courses of four credits each. The program prepares graduates for careers in finance, analytics, research, and policy, while also laying a strong foundation for advanced research and doctoral studies.

<b>Course Structure</b>	
<b>Major and Compulsory</b>	<b>Major</b>
<ul style="list-style-type: none"> <li>• Microeconomics</li> <li>• Macroeconomics</li> <li>• Statistics and Operation Research</li> <li>• Basic Econometrics</li> <li>• Business Analytics</li> <li>• Research Methodology</li> <li>• OJT (On-the-Job Training) / Internship</li> <li>• Research Project</li> </ul>	<ul style="list-style-type: none"> <li>• Financial Derivatives</li> <li>• Corporate Finance and Capital Budgeting</li> <li>• Security Analysis and Portfolio Management</li> <li>• International Finance – II</li> <li>• Financial modelling and engineering</li> <li>• Financial Risk Management</li> <li>• Project Appraisal and Finance</li> </ul>

<b>OE (Open Elective) / Elective</b>
<ul style="list-style-type: none"> <li>• Economics of Banking</li> <li>• International Finance</li> <li>• Insurance Economics</li> <li>• Financial Institution, Market, and Regulations</li> <li>• Behavioural Finance</li> <li>• Accountancy/Financial Statement Analysis</li> <li>• Process reforms</li> <li>• Dynamics of the New Age Financial System</li> <li>• International Relations</li> <li>• Economic Sociology</li> <li>• Strategic Finance and Investment Banking</li> <li>• Causal Inference Model</li> <li>• Public Economics</li> <li>• Social Exclusion and Inclusive Policy</li> <li>• Insurance Economics (Advanced Practices)</li> </ul>



## ■ M.Sc. Economics (Geopolitics and Geo-economics)

The M.Sc. Economics (Geo-politics and Geo-economics) is a NEP 2020-aligned two-year full-time Post-Graduate Programme started from the academic year 2024-25. The programme intends to blend economics with specialisation in geopolitics and Geo-economics. As the world becomes increasingly complex, competitive, and convoluted, it is imperative to pay close attention to the interdependent, multidimensional relationship between geopolitics and economics. This programme offers theoretical underpinnings, practical knowledge and policy insights in Geopolitics and Geo-Economics.

The strength of this programme lies in Business Analytics, Econometrics, Dynamics of New Age Financial Systems, International Law and Security, Asia's geo-economics, Emerging Powers, Case Study Writing, and Research Methodology.

With a focus on a contemporary, relevant curriculum taught and mentored by highly qualified internal faculty and distinguished practitioners, including senior former members of the Indian Foreign Service and the Indian Administrative Service, this programme aims to combine academic rigour with employability. Competences and skills acquired are directly transferable to a range of employment opportunities, including the public sector, think tanks, NGOs, and the private sector. Thus, in the end, with a NEP 2020-enabled curriculum and pedagogy, and competent internal and external faculties, this programme empowers the students to become potential experts and analysts, thereby equip them for evaluating the headwinds and tailwinds global impacts of geopolitics and geo-economics.

Course Structure	
Major and Compulsory	Major
<ul style="list-style-type: none"> <li>• Microeconomics</li> <li>• Macroeconomics</li> <li>• Statistics and Operation Research</li> <li>• Basic Econometrics</li> <li>• Business Analytics</li> <li>• Research Methodology</li> <li>• OJT (On Job Training) / Internship</li> <li>• Research Project</li> </ul>	<ul style="list-style-type: none"> <li>• Geopolitical Scenario: Order and Disorder in multipolar world</li> <li>• India's Foreign Policy</li> <li>• International Trade and Financial Architecture</li> <li>• Global Political Economy</li> <li>• Asia's Geo-economics</li> <li>• Dynamics of the New Age Financial System</li> <li>• Changing contours of Globalisation and Global Financial Crises</li> <li>• Emerging Powers in Global Politics</li> <li>• International Security and Law</li> <li>• Role of the USA in Geo Politics and Geo Economics</li> <li>• Case Study writing on Regional blocs vs multilateralism</li> </ul>



**OE (Open Elective) / Elective**

- Introduction to Geo Politics and Geo Economics
- Process reforms
- Economic Sociology
- Economics of Banking
- Causal Inference Model
- Financial Risk Management
- Social Exclusion and Inclusive Policy
- Public Economics
- Behavioural Finance
- Economics of Labour

**■ M.Sc. Economics (International Business Economics and Finance)**

The two year M.Sc. Economics (International Business Economics and Finance) (IBEF) programme helps the students learn broad aspects related to the international business environment, export management, FDI policy, FTP policy, international trade theories, international trade bodies like WTO, international logistics and supply chains, international relations, several aspects of international finance and foreign portfolio investment. Emphasis has been placed on strategic alliances, international technical/financial collaboration, and joint ventures to enable students to deliver efficient services and tackle practical situations in a business environment. Along with this, students are trained in data analysis and various quantitative techniques in Statistics and Econometrics using packages like R, STATA, SQL, Power BI, Tableau, SPSS, and MS Excel, and hands-on training/knowledge on databases such as Bloomberg Terminal and Trade Analytics.

The M.Sc. in Economics (IBEF) programme offers a distinctive platform for students to shape their careers in International Economics, Finance, or an integrated combination of both fields. The curriculum is designed to build a strong analytical foundation in global trade, macroeconomic policy, financial markets, and international financial systems. Students gain exposure to real-world economic and financial challenges, enabling them to understand cross-border capital flows, exchange rate dynamics, global financial regulation, and international development issues. This flexibility allows graduates to pursue diverse career paths in institutions such as central banks, international organisations, financial institutions, consulting firms, policy think tanks, and multinational corporations. By combining theoretical rigor with practical relevance, the programme equips students with the skills needed to operate effectively in an increasingly interconnected global economy.

<b>Course Structure</b>	
<b>Major and Compulsory</b>	<b>Major</b>
<ul style="list-style-type: none"> <li>• Microeconomics</li> <li>• Macroeconomics</li> <li>• Statistics and Operation Research</li> <li>• Basic Econometrics</li> <li>• Business Analytics</li> <li>• Research Methodology</li> <li>• OJT (On Job Training) / Internship</li> <li>• Research Project</li> </ul>	<ul style="list-style-type: none"> <li>• Mathematics for Economics / Pro-gramme specific Course</li> <li>• Trade Theory</li> <li>• Trade Law</li> <li>• Trade Policy</li> <li>• International Finance -I</li> <li>• Financial Econometrics</li> <li>• Export Import Procedure and Inter-national Logistics</li> <li>• International Finance II</li> <li>• Corporate Finance and Capital Budgeting</li> <li>• Financial Derivatives</li> <li>• The Economics of Multinational Enterprises</li> </ul>
<b>OE (Open Elective) / Elective</b>	
<ul style="list-style-type: none"> <li>• Accountancy/Financial statement Analy-sis</li> <li>• Process reforms for governance and development</li> <li>• Dynamics of New Age Financial System</li> <li>• International Relations</li> <li>• Economic Sociology</li> <li>• Strategic Finance and Investment Bank-ing</li> <li>• Economics of Banking</li> <li>• Insurance Economics</li> <li>• Causal Inference Models and Ap-plied Econometrics</li> <li>• Public Economics</li> <li>• Behavioural Finance</li> <li>• Financial Economics</li> <li>• Financial Risk Management</li> <li>• Social Exclusion and Inclusive Policy</li> <li>• Insurance Economics (Advanced Practic-es)</li> <li>• Economics of Labour</li> </ul>	



### ■ **M.Sc. Economics (Population Studies and Health Economics)**

The M.Sc. Economics (Population Studies and Health Economics) (PSHE) is a specialised M.Sc. Economics programme with a strong analytical and interdisciplinary orientation. It integrates demographic analysis and health economics to address contemporary challenges in population and health systems. The programme enables to examine population dynamics and their linkages with health, nutrition, inequality, public policy, and other socio-economic outcomes. It emphasises policy relevance and applied research.

The population studies component builds competence in population processes, structures, and transitions. These include fertility, mortality, migration, ageing, and related demographic phenomena. The health economics component strengthens understanding of health systems and health-related decision-making. It covers healthcare delivery and utilisation, health financing and insurance, regulation, and policy evaluation, among others. The curriculum also introduces forecasting, actuarial approaches, and data science and machine learning methods relevant to population and health research. Learning is supported through applied coursework and data-based assignments.

Students work with major national datasets, including Census microdata, NFHS, NSS, LASI, and HMIS. They receive hands-on training in analytical and visualization tools, including Python, R, Stata, SQL, GIS, SPSS, Power BI, and Tableau. The programme prepares graduates for policy research, programme evaluation, and professional roles across government, research institutions, healthcare analytics, insurance, and development sectors.

## Course Structure

Major and Compulsory	Major
<ul style="list-style-type: none"> <li>• Microeconomics</li> <li>• Macroeconomics</li> <li>• Statistics and Operation Research</li> <li>• Basic Econometrics</li> <li>• Business Analytics</li> <li>• Research Methodology</li> <li>• OJT (On Job Training) / Internship</li> <li>• Research Project</li> </ul>	<ul style="list-style-type: none"> <li>• Public Health and Epidemiology</li> <li>• Health Economics - I</li> <li>• Health Economics – II</li> <li>• Population and Development, Population Projections</li> <li>• Actuarial Methods for Health and Life Insurance</li> <li>• Health Economics – III</li> <li>• Migration and Urbanization</li> </ul>

### OE (Open Elective) / Elective

- Introduction to Population Studies
- Mathematics for Economics
- Fertility
- Mortality and Morbidity
- Causal Inference and Impact Evaluation in Public Health
- Statistical and Spatial Modeling for Public Health
- Health Informatics-1
- Social Exclusion and Inclusive Policy
- Behavioural Economics
- Health Informatics-2
- Applications of Statistical Software
- Insurance Economics
- Urban Economics
- Advanced Econometrics
- Financial Economics
- Introduction to Game Theory
- Economic Sociology
- Insurance Economics (Advanced Practices)
- Economics of Labour
- Causal Inference Models and Applied Econometrics
- Process reforms for governance and development
- Dynamics of new age financial system: Emerging risks and the move towards resilience
- One SWAYAM course (Public Health Management / Exploring Survey Data on Health Care)
- Coursera course (Biostatistics in Public Health)



## ■ M.Sc. Economics (Public Policy)

Launched in the academic year 2023-24, the M.Sc. Economics (Public Policy) is an intensive, two-year, full-time postgraduate programme that blends the rigour of economics with specialisation in Public Policy. It offers an opportunity to understand problems in public policy framing, and conducting robust, applied and impactful studies that influence public policy. This programme offers theoretical and conceptual underpinnings in economics, with an evaluation of Public Policy, with a special emphasis on design thinking and systems thinking.

The strength of this programme lies in: Rigorous Academic Foundation, Field Study, Case Study Writing, Advanced Research Capabilities, Sector-Specific Expertise, the "Practitioner" Edge, Project Management, Soft Skills, and Presentation and Communication (oral and written).

This programme will give the students a keen understanding of theoretical issues in public policy, and its relationship with empirical research, which significantly influences the public policy process, such as ideologies and institutions.

After completing this program, students will be able to design research problems, undertake a range of policy-relevant studies, and conduct research to the highest standards. This programme offers versatile skills that will be very useful to policymakers, researchers, and academicians. Thus, in the end, with a focused curriculum, NEP 2020-enabled pedagogy, and competent internal and external faculty, this programme transforms the student into a potential public policy expert, employable in the public sector, think tanks, NGOs, and the private sector.

<b>Course Structure</b>	
<b>Major and Compulsory</b>	<b>Major</b>
<ul style="list-style-type: none"> <li>• Microeconomics</li> <li>• Macroeconomics</li> <li>• Statistics and Operation Research</li> <li>• Basic Econometrics</li> <li>• Business Analytics</li> <li>• Research Methodology</li> <li>• OJT (On Job Training) / Internship</li> <li>• Research Project</li> </ul>	<ul style="list-style-type: none"> <li>• Fundamentals of Public policy</li> <li>• Public Economics</li> <li>• Public Policy :Theory and Application</li> <li>• Soft Skill</li> <li>• Public Policy: Process, Implementation, and Evaluation</li> <li>• Process Reform : Governance and Development</li> <li>• Field Study</li> <li>• Impact of Public Policy on Primary, Secondary and Tertiary Sectors</li> <li>• Evidence-based Public Policy Evaluation</li> <li>• Project Management</li> <li>• Money, Banking, Trade and Financial Market</li> <li>• Case Study writing on Public Policy Implementation</li> </ul>

**OE (Open Elective) / Elective**

- International Economics
- Public Economics
- Causal Inference Models and Applied Econometrics
- International Economics
- Public Economics
- Economics of Labour
- Population Studies
- Financial Institutions and Markets
- Accountancy and Financial Statement Analysis
- Indian Political System
- Institutional Economics
- Public Policy and Administration
- International Relations
- One SWAYAM Course (AI, Machine Learning)
- Process reforms for governance and development
- Insurance Economics
- Quantitative Aptitude
- Advanced Microeconomics
- International Economic Institutions
- Insurance Economics (Advanced Practices)
- Dynamics of new age financial system: Emerging risks and the move towards resilience
- Zero Credit courses: Disaster Management, Indian Constitution, Environmental Sustainability and Corporate ESG





## ■ Prerequisite Courses (Bridge Courses)

Keeping in mind the diversified background of the students GIPE conducts the prerequisite courses for MA Economics students to help the students to adapt the academic demand of the programme . Based on the CUET/CET score some of students admitted to the programme will be asked to complete the following prerequisite courses.

Course name	Purpose	Commencement	Completion
Mathematics	To build foundational knowledge essential for advanced study	May start before the commencement of academic session Attendance is mandatory	Non-credit course passing them is mandatory to ensure foundational competency and progression in the programme .
Statistics	To familiarize students with basic statistical concepts and techniques		
Microeconomics	To provide fundamental understanding of economic theory		

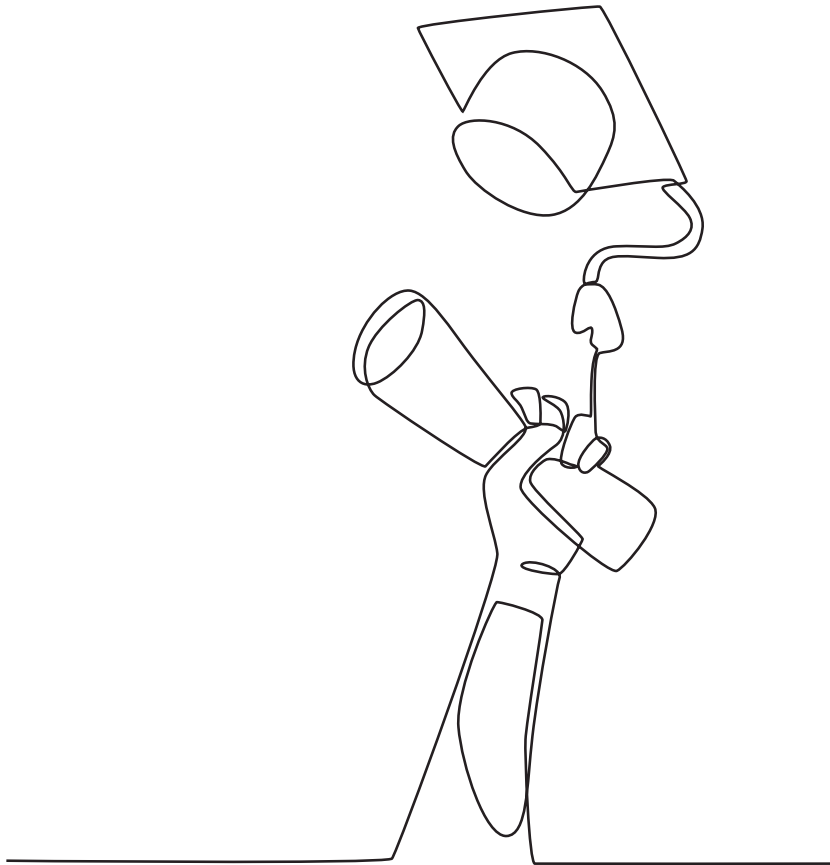


## ■ Post Graduate Programme in Financial Economics (PGPFE)

The one-year Postgraduate Programme in Financial Economics started in 2022. The programme consists of three trimesters of academic work. The first two trimesters are classroom-based learning, and the third trimester is for academic research under a Professor or Corporate internship. Students gain knowledge in the various domains of financial economics by exposure to sophisticated econometric tools and software, along with the extensive underpinnings of financial theory. The pedagogy of the programme is a mix of robust theory-based classroom teaching amalgamated with the analysis of high-frequency financial data. This course will equip the students to provide real-time solutions to the issues related to the financial markets. Total number of credits is 48.

- Principles of Finance Using MS Excel
- Econometrics for Finance
- Financial Economics – 1
- Financial Modeling
- Financial Econometrics
- Financial Economics – 2
- International Finance
- Developmental Finance and Programme Evaluation





## **Admission Process** (Undergraduate and Postgraduate Programme)

## ■ Eligibility Criteria and Selection Process

### Indian Citizens

The admission into the PG and UG programmes offered by the Gokhale Institute of Politics and Economics (GIPE), Pune, will be done by the COMMON UNIVERSITY ENTRANCE TEST- CUET- (CUET(UG) and CUET (PG) - 2026 and/ or GIPE COMMON ENTRANCE TEST- GCET (GCET(UG) and GCET (PG) - 2026

Sr No	Name of Examination	Where to look for the information	For updates about
1	For CUET (PG) and CUET (UG),	Official website of NTA (National Testing Agency)	Registration dates and Result declaration
2	GCET (PG) and GCET (UG)	Official website of Gokhale Institute of Politics and Economics, Pune <a href="https://gipe.ac.in/">https://gipe.ac.in/</a>	Registration dates, Result and Merit declaration

## ■ Entrance Examination and Admission Process (2026)

For Admissions in 2026, the Institute will consider scores from CUET (UG/PG) and the GIPE Common Entrance Test (GCET) conducted by the Institute. The GCET will be held on two separate dates, providing students with an additional opportunity to improve their scores. The examination dates are April 12, 2026 and May 31, 2026. These examinations will be conducted for both Undergraduate (UG) and Postgraduate (PG) programmes. The structure and marking pattern of the GCET will follow the CUET (UG/PG) format, ensuring familiarity and fairness for students.

Students may choose to apply through CUET, GCET, or both. There are four possible options available to applicants:

1. Appear only for CUET
2. Appear for one GCET examination
3. Appear for both GCET examinations
4. Appear for CUET as well as both GCET examinations

Students who wish to appear for the GCET examinations must submit a separate application for each attempt. If a student applies for a particular GCET examination but remains absent, he/she must submit a fresh application to appear for the second GCET examination. Requests for a change of examination date will not be entertained.

Applications for admission will be submitted through the Institute's ERP-based admission portal. While filling out the application form, students must indicate their programme preferences, which will be treated as final. For PG programmes, students may provide up to eight programme preferences, while UG applicants may indicate up to



two preferences. Once submitted, programme preferences cannot be changed for any examination attempt.

Candidates applying through CUET must upload their CUET scores and relevant supporting documents once the results are declared. For the GCET, students will be informed of their scores after the first examination attempt, allowing them to decide whether to appear for the second GCET examination.

The final merit list will be prepared based on the highest score a candidate obtains across all eligible examinations (CUET and/or GCET). This ensures that students receive the benefit of their best performance.

The admission portal will open on March 6, 2026, and the detailed admission notification will be available on the Institute's official website. Students are advised to regularly check the website for updates and important announcements regarding the admission process.

Students are advised to check the official website of the NTA (National Testing Agency) for registration dates and information on CUET–PG–2026 and CUET–UG–2026, respectively.

### **Key Admission Information**

#### **Admission Portal Registration**

All applicants must first register on the Institute's Admission Portal and create a Login ID. After logging in, the admission dashboard will provide access to the following forms:

- Main Admission Form – UG
- Main Admission Form – PG
- GCET Round 1
- GCET Round 2

#### **Main Admission Form (UG/PG)**

Applicants must first complete the Main Admission Form for the programme they wish to apply for. This form requires students to provide personal details, academic qualifications, and contact information.

#### **CUET 2026 Information**

Students must indicate whether they have registered for CUET 2026.

Applicants who have appeared for CUET must enter their CUET Application Number/ID and upload their CUET marks after the results are declared.

#### **Application Number**

After completing the Main Admission Form and paying the application fee, the system will generate a unique Application Number. This Application Number will be used for all further admission processes, including applying for GCET Round 1 or Round 2.

### **GIPE Common Entrance Test (GCET)**

Students who have not appeared for CUET may apply for admission through the GIPE Common Entrance Test (GCET). Students who have appeared for CUET may also choose to appear for GCET if they wish.

### **GCET Applications**

Using the Application Number, applicants may apply for GCET Round 1 and/or GCET Round 2. Since basic information is already submitted in the Main Admission Form, students will only need to select the examination round, choose the examination centre, and pay the required application fee.

### **Multiple Examination Attempts**

Students may appear for CUET, GCET Round 1, GCET Round 2, or any combination of these examinations.

### **Merit List Preparation**

For admission purposes, the highest score obtained by the candidate across all eligible examinations (CUET, GCET Round 1, or GCET Round 2) will be considered for preparing the merit list.

### **Important Note**

This admission process ensures that applicants have multiple opportunities to secure admission based on their best performance.

### **Admission Process for Post Graduate Programme in Finance (PGPFE)**

- While eligibility criteria remain the same as the Master's Program, admission will be through an interview.
- After filling up the form, shortlisted candidates will be called for an interview.

### **Application Fees (non-refundable)**

Open/ OBC: Rs 1000/- & SC/ST/Other reserved categories: ₹ 750-





## Table 1 : Eligibility Criteria and Selection Process

### PG Programmes (A)

Mode of admission	Subject Code for CUET-2026*	Seats
CUET-PG – 2026/ GCET - 2026	COQP 10 (Economics)	60 Seats in each program (Excluding Super numerary)

#### Programme Name

- M.Sc. Economics
- M.Sc. Economics (Financial Economics)
- M.Sc. Economics (Agri business Economics),
- M.Sc. Economics (International Business Economics and Finance),
- M.Sc. Economics (Population Studies and Health Economics),
- M.Sc. Economics (Public Policy),
- M.Sc. Economics (Geo-politics and Geo-economics)

#### Eligibility Criteria

- At least 50% marks in aggregate (45% for SC / ST reserved category candidates) at graduation level.
- Candidates who have appeared for the final degree examination during 2025-26 and whose results are awaited shall also be eligible to apply.
- Admission to such candidates will be "Provisional" till they provide the necessary documents.

#### Reservation Policy

As per the Government of India Policy

## PG Programmes (B)

Mode of admission	Subject Code for CUET-2026*	Programme Name	Seats
CUET-PG – 2026/ GCET - 2026	COQP 10 (Economics)	• M.A. Economics	60 Seats

### Eligibility Criteria

- At least 50% marks in the aggregate (45% for SC / ST reserved category candidates) at graduation level.
- Candidates who have appeared for the final degree examination during 2025-26 and whose results are awaited shall also be eligible to apply.
- Admission to such candidates will be “Provisional” till they provide the necessary documents.

### Reservation Policy

As per the Government of Maharashtra Policy

## U.G Programmes

Mode of admission	Subject Code for CUET-2026*	Programme Name	Seats
CUET-UG – 2026/ GCET - 2026	<ul style="list-style-type: none"> <li>• General Test (Subject Code 501)</li> <li>• English (Subject Code 101)</li> </ul>	• B.Sc. Economics	• 150 Seats
		• B.Sc. Economics (Data Science) (AEDP)	• 60 Seats

### Eligibility Criteria

- At least 60% marks in aggregate (50% marks for SC / ST category candidates) in their 12th Standard board examination or equivalent examination.
- Candidates who have appeared for the HSC/CBSE/ICSE or equivalent examination during 2025-26 and whose results are awaited shall also be eligible to apply.
- Admission to such candidates will be “Provisional” till they provide the necessary documents.

### Reservation Policy

As per the Government of India Policy



## PGPFE Programmes

Mode of admission	Subject Code for CUET-2026*	Programme Name	Seats
GIPE Selection Process	• Selection by Interview	• Post Graduate Program in Financial Economics (PGPFE)	• 40 Seats

### Eligibility Criteria

- A graduate degree in any discipline or stream that includes statistics as one of the courses.

### Reservation Policy

As per the Government of India Policy

## ■ NRI / OCI / International

- There is a limited quota available for Foreign nationals/OCI card holders/NRIs. Candidates belonging to the above category need not apply through the CUET 2026/ GCET 2026 score. Eligibility for the P.G. programme will be based on grade sheets equivalent to 50% marks obtained at the graduation level from any foreign university. The eligibility for the UG programme will be 60% in aggregate in 12th standard or equivalent examination.
- Candidates who have appeared for the final degree examination/ 12th Standard examination during 2026-2027 and whose results are awaited shall also be eligible to apply. Admission to such candidates will be provisional till they provide the necessary documents.
- Selection of the candidates will be based on interviews conducted by GIPE.
- For any query, please write to [intloffice@gipe.ac.in](mailto:intloffice@gipe.ac.in)

## Reservation Policy and Supernumerary Quota

### **M.Sc. Economics (Agribusiness Economics)**

#### **M.Sc. Economics**

### **M.Sc. Economics (Financial Economics)**

### **M.Sc. Economics (Geopolitics and Geo-economics)**

### **M.Sc. Economics (International Business Economics and Finance)**

### **M.Sc. Economics (Population Studies and Health Economics)**

### **M.Sc. Economics (Public Policy)**

- Reservation as per the Government of India Policy.
- 10 % seats supernumerary for the Economically Weaker Sections (EWS) quota under the general category.
- Up to 25 % students under NRI/Foreign National under supernumerary in each Programme
- 4 % seats for the Person with Disability (PWD) category supernumerary in each programme.
- Two supernumerary seats under the Orphan Children Category are combined in all M.Sc. programmes.
- Maximum two candidates under the Armed Forces quota (Army, Navy and Air Force) under supernumerary as per the Defence Officers and Ex- Defence Officers' priority list.

### **M.A. Economics**

- Reservation as per the Government of Maharashtra Policy.
- 10 % EWS seats are included in General / open seats and reserved for the student's domicile in Maharashtra state only.
- Up to 25 % students under NRI/Foreign National under supernumerary in each Programme
- 4 % seat in the programme for the Person with Disability (PWD) category supernumerary.
- One supernumerary seat under Orphan Children Category.
- Maximum two candidates under the Armed Forces quota (Army, Navy and Air Force) under supernumerary as per the Defence Officers and Ex- Defence Officers' PRIORITY LIST.
- The Institute reserves the right to allot seats for the candidates who belong to special groups if the Government of Maharashtra directs to allot special quota or seats additionally.



**B.Sc. Economics (Honours)**

**B.Sc. Economics (Data Science)**

- Reservation is as per the Government of India.
  - 10 % seats supernumerary for the Economically Weaker Sections (EWS) quota under the general category.
  - Up to 25 % students under NRI / Foreign National under supernumerary to Undergraduate Programme.
  - 4% seats for the Persons with Disabilities (PWD) category, supernumerary in the programme.
  - Two supernumerary seats under the Orphan Children Category.
  - Maximum two candidates under the Armed Forces quota (Army, Navy and Air Force) under supernumerary as per the Defence Officers and Ex- Defence Officers' PRIORITYLIST.
- 
- The percentage of unreserved seats may vary with the new guideline and reservation policy of the Government.
  - The vacant seats under the reserved categories can be transferred to the open category if seats remain vacant after offering admission to all the reserved candidates.
  - The vacant seats under "supernumerary quota", if any, will be filled up as per the merit list and also applying reservation policy.



## Fees for First Year (Excluding Hostel Fees)

Sr. No	Name of the Programme	Fees for Indian and SAARC Students		Fees for International Students
		Open & OBC Categories	SC/ST/DTNT & VJNT Categories	
1	M.A. Economics	Open & OBC Categories	1,58,000.00	6,40,000.00
		SC/ST/DTNT & VJNT Categories	54,000.00	
2	M.Sc. Economics (Agri-Business Economics)	2,19,000.00		
3	M.Sc. Economics (Population Studies and Health Economics)			
4	M.Sc. Economics	3,00,000.00		
5	M.Sc. Economics (Financial Economics)			
6	M.Sc. Economics (Geopolitics and Geo-economics)			
7	M.Sc. Economics (International Business Economics and Finance)			
8	M.Sc. Economics (Public Policy)			
9	B.Sc. Economics	2,28,000.00		
10	B.Sc. Economics (Data Science)			

**Note: For details see Annex I and II**

- Gokhale Institute of Politics & Economics, facilitates Educational Loans from various banks at affordable/competitive interest rates. For details see Annex IV.

## Important Dates: GCET Entrance Exam

Sr. No.	Particulars	Important Date
	<b>GCET Round 1</b>	12/04/2026
1.	Last date to fill the form for GCET Round 1	2/04/2026
2.	Hall ticket issue for GCET Round 1 (Tentative)	7/04/2026
	<b>GCET Round 2</b>	31/04/2026
1.	Last date to fill the form for GCET Round 2	21/05/2026
2.	Hall ticket issue GCET Round 2 (Tentative)	26/05/2026

Last date to fill the application for those student who have appeared only for CUET 2026 will be announced once the result of CUET 2026 is declared. However they can fill the main admission form.

### ■ Cancellation of Admission and Refund Rules

Cancellation of admissions and refund of fees shall be as per the UGC Norms published by the commission from time to time, and cancellation of admissions will be through the online System only.



## Important Instructions

Admission will be based on merit, and no Management Quota is available.

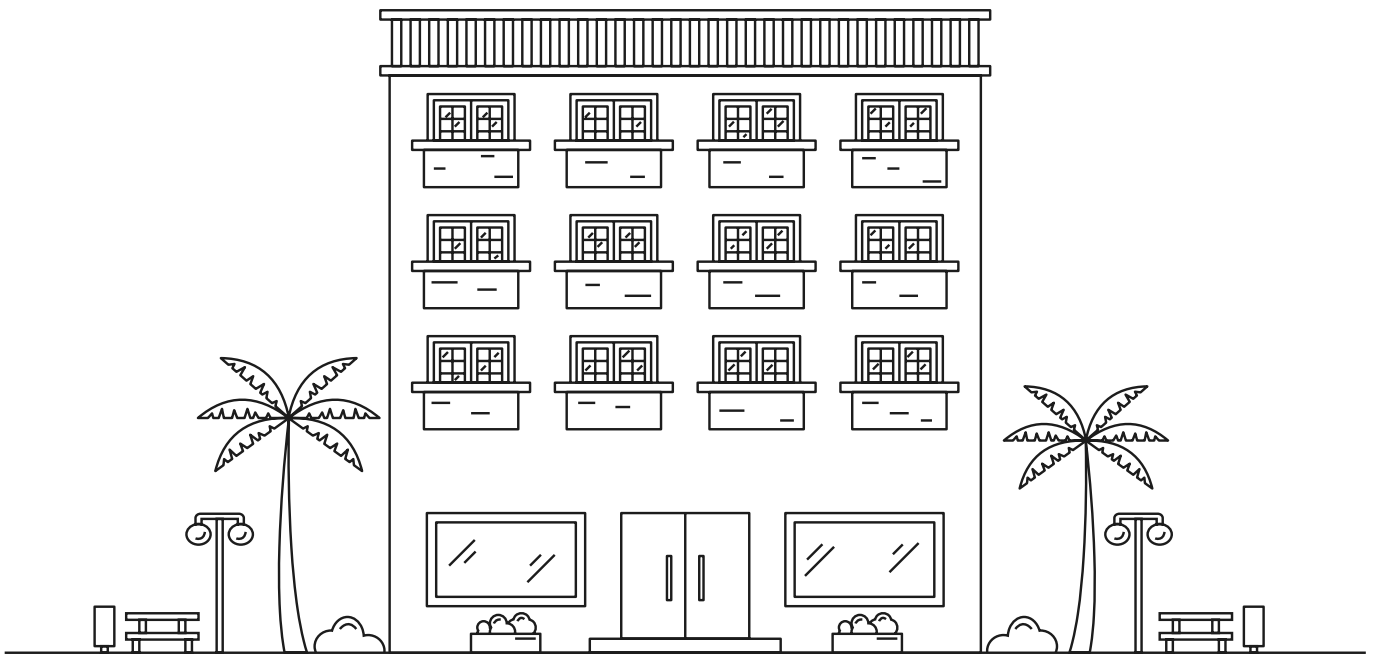
- Candidates are required to generate an Academic Bank of Credits (ABC) ID from the website <https://www.abc.gov.in/> and enter the same in the application form. The ABC ID is mandatory for filling out the application form.
- The preferences given by the candidates during filling up the form for M.Sc programme will be considered as final and cannot be reversed after submission.
- In case of any dispute, the decision of the Admission Committee of the GIPE shall be final and binding on the candidates.
- Admission to the Programmes will be provisional and shall be subject to confirmation by the "Admission Committee" of the GIPE upon physical verification of original documents.
- The submission of all original documents/certificates within a stipulated time is mandatory.
- The decision of the Admission Committees in the matter of admission, verification of documents and programme -wise allocation of seats shall be final and binding on the candidates.
- Candidates shall submit the following original certificates at the time of document verification:
  1. Transfer Certificate/Leaving Certificate
  2. Statement of Marks
  3. Migration Certificate
  4. Caste Certificate (for Reserved Categories)
  5. Certificate of Disability (for Persons with Disabilities)
  6. Valid Non-Creamy Layer Certificate (for OBC and those categories, which are required to submit it to claim reservation quota as per government rules)
  7. Certificate of Orphan (if admission is under that category) issued by the Government Authority
- The schedule, process and procedure of admissions shall be notified separately on the website of the GIPE.
- The candidates must ensure to have all mandatory documents with them before depositing "Admission fees".



- The GIPE will not be responsible for any monetary loss of a candidate if he/ she is not eligible for admission in any category/quota and he/she deposits admission fees.
- The candidates, who are admitted to the programme, are required to give two undertakings as per the UGC norms and Government of Maharashtra resolution at the time of admission/document verification without fail (See ANNEX X).
- Students have to abide by all the rules and regulations of the institute.
- Maintaining 75% attendance in all the courses is compulsory; failing to do so will result in students not being allowed to sit for the end semester examination.
- All the admitted students are advised to bring their own laptop to the classroom.
- In addition to completion of all the mandatory courses required for their programme, a student may choose to pursue any additional course offered by GIPE, subject to approval from the programme coordinator. Such courses will be treated as certificate courses, and a certificate will be awarded upon successful completion. Students opting for these courses will be required to pay an additional fee.
- The GIPE reserves the right to drop or add any course to a programme.
- Ragging, whether inside or outside the GIPE campuses, is strictly banned by law. Instances of ragging, if any, shall be dealt with strictly in accordance with the provisions of UGC Curbing the Menace of Ragging in Higher Educational Institutions Regulations 2009. Complete provisions of the above Regulations and details of Anti-Ragging Committee, Anti-Ragging Squad and Anti-Ragging Helpline are provided separately on the institutional website [www.gipe.ac.in](http://www.gipe.ac.in).







# Hostels

## Application & Admission Process for Hostel

- Limited hostel accommodation (on a sharing basis) is available. Of the four hostel buildings, three are exclusively for P.G. students located on the residential campus (800 metres from GIPE). One Girls' Hostel is outside the residential campus (within 500 metres of GIPE).
- Admission will be given in the hostels based on the merit list at the time of admission to the respective programme as per the Institute norms.
- Allocation of seats will be based on vacancy, merit and reservation policy.
- Student to login to the web portal <https://erp.gipe.ac.in/login.htm>. After the applicant converts into a student, i.e. by paying the admission fee, the applicant login now gets converted to the student's ERP login. Once the Student logs in to the web portal, the student can apply for the hostel.
- If a student meets the eligibility criteria outlined in the hostel rules, regulations, merit list, and reservation policy, they are qualified to submit an application for hostel accommodation. If the student gets the hostel accommodation, the hostel fee tab gets activated.
- After filling in the asked details and submitting the hostel fee, the room in the hostel will be allocated to students. Students have to show the Payment receipt to the Hostel warden to occupy the room and follow the hostel check-in formalities.
- At the time of admission to the hostel, every student shall sign an undertaking that the student shall follow the Rules and Regulations laid down by the Institute. In the event of a breach of any of them, the student shall be subject to disciplinary action.
- Students are required to disclose all past medical history at the time of admission to the hostel. Failure to disclose past medical history puts students at risk.
- If any student provides any false statement or information in the hostel admission form, the students' admission shall be liable to be cancelled. On such cancellation, the student shall not be entitled to enter the hotel or any part thereof.
- The rooms will be allocated randomly, and no reshuffling is possible, except in special situations (such as genuine medical reasons) with the permission of hostel authorities. In case of genuine medical reasons, a student is required to send a request to **hostels@gipe.ac.in** along with the necessary documents bringing to the attention of the Hostel Superintendent. Unless the students receives a reply, they are not supposed to make any changes on their own. As per the institute policy in such case, the institute reserves the right to allocate the rooms to other eligible students.



### ■ Amenities in the Hostel Rooms

- Each room is provided with a bed (but not a mattress, bedsheet, blanket, pillow, bucket, mug, etc), a cupboard, a study table and a chair. The source of drinking water is common (on each floor or on an alternate floor).
- The girls' hostel (in residential campus) has four occupancies per room.
- For the Boy's hostel, 'Wing-I' is a double occupancy and 'Wing II' is a triple occupancy per room.

### ■ Other Hostel Facilities

- Gym facility for students
- Availability of the Health Centre
- Availability of Mess
- Availability of common reading/study rooms
- Laundry service within the hostel premises
- 24\*7 internet facility

### ■ Hostel Fees Per Annum (Total)

Note: For details, see Annex III

### ■ Hostel Admission Cancellation and Refund Rules

- Refund of Hostel Fees on cancellation of admission will be made after three months, after keeping 18% of the processing fees with the Institute.
- This facility of refund of an amount on cancellation will be applicable up to the permissible date, as received through UGC Notifications for cancellation of admissions for the year 2025. It will be notified in due course through the ERP / Website after receipt of formal notifications from the UGC.
- After the notified last date from the UGC for cancellation of admissions, there will not be any refund on cancellation of admissions, except the Caution Money deposited at the time of admission
- The policy of refund for cancellation of Hostel admissions is subject to ratification from the Finance Committee and the Executive Council of the institute, and changes/variances, if any, in rules/policy will be communicated to the students from time to time, as the case may be.
- No pro-rata fee adjustments will be made irrespective of admission on a later date or cancellation after admission in the hostels.
- Any student who is expelled from the Institute will automatically cease to be a hostel student. In such a case, the hostel fee will not be reimbursed, except for the caution money deposited at the time of admission.

## ■ Hostel Rules

- The Institute has limited Hostel accommodation on a shared basis. The rooms will be allocated randomly and no reshuffling is possible. The inmates shall not interchange their allotted rooms without prior permission of the Rector. Requests for the same shall be entertained only on medical grounds. The hostel authority has the right to reshuffle rooms or change room allotments, and compliance is mandatory.
- Students are required to inform the Hostel Superintendent whenever they change their room to ensure that room changes are properly documented for administrative and safety purposes. Changing rooms without informing the HS may result in disciplinary actions.
- Ragging inside or outside the Institute campuses is strictly banned. Legal action will be initiated against students involved in ragging, as per provisions of the UGC Anti-Ragging Regulations, 2009. Students are asked to visit the provided links to know more about this and its guidelines: <https://www.antiragging.in/assets/pdf/information/ugc-iec-guidlines-for-councils-universities-and-colleges-for-curbing-the-menace-of-ragging.pdf> <https://www.ugc.gov.in/oldpdf/ragging/minuterag230409.pdf>
- Students are expected to conduct themselves in a manner befitting the Institute's stature. Students shall not indulge in any activity that may bring disrepute to the Institute.
- The inmates should observe decorum in the hostels and the residential campus. Since the hostels are located in a residential area, loud music, late-night activity, and partying on the campus are not permitted. Students shall not cause any discomfort or inconvenience to other fellow students or other residents on the campus.
- Celebration of birthdays inside the hostels and the residential campus is not permitted.
- Consumption of alcoholic drinks, smoking, eating paan/tobacco products and spitting is strictly prohibited on the Hostel / Residential campus.
- Subscription to the hostel mess is compulsory for all inmates. Students residing at the hostel shall be required to pay the mess charges upfront along with the tuition fees. No instalment in these payments is admissible. No refund towards mess fees deposited is admissible in case of non-availing the hostel mess facilities for any reason.
- The Institute shall appoint a Mess Committee comprising of Student Representatives, Hostel superintendent, Members of the teaching/non-teaching staff and the Manager/ Representative of the Mess Contractor. The Committee shall oversee the general functioning of the student mess and shall monitor the quality, cleanliness, maintenance and upkeep of the kitchen/dining hall, etc.



- The use of electrical appliances such as heaters, irons, immersion rods, etc., is not permitted in the rooms. Under no circumstances cooking shall be permitted in the hostels.
- The inmates shall be responsible for the cleanliness of their rooms. They are expected to clean their room on their own and keep the hostel premises clean.
- Resident students shall consciously develop water and energy-saving habits and avoid wasteful, improper use of water and electricity, as well as amenities such as furniture, water coolers, washing machines, etc. provided in the hostels.
- Under no circumstances shall students be permitted to allow any person to stay overnight in their rooms.
- Male students/visitors are not permitted to enter the Girls' Hostels.
- Female students are not permitted to enter the Boys' Hostels.
- Students shall not bring and/or keep any pets on the premises, including fish, cats, dogs, and so on. Students should desist from pampering stray dogs by offering food, petting them etc.
- Unauthorised guests or outsiders in the hostel room are strictly prohibited. Guests may be allowed on the prior written permission of the Hostel superintendent/ Rector. Any student keeping an unauthorised person in his/her room will be liable to disciplinary action amounting to expulsion from the hostel.
- Students shall treat the staff and housekeeping staff of the Hostel with due courtesy at all times. Service of the housekeeping staff shall NOT be utilized for private or personal work. No tips in cash or kind will be given to the staff of the Hostel.
- The Institute will not be responsible for any loss of money or valuables. Students are advised not to keep ornaments, jewelry, and large sums of money with them.
- The gates of the residential campus shall remain closed from 11.30 p.m. to 5.00 a.m. No student shall be permitted to leave or enter the campus during the above period except with prior permission of the Hostel superintendent, Rector, or any other official authorised by the Institute.
- Aimless roaming on the campus will not be allowed by the students during the above-mentioned period. All the inmates will be expected to be in their allotted rooms.
- Please note informing the hostel superintendent/rectors getting permission for leave is only related to hostel records. Regarding academic matters (e.g., fulfilment of the requirements of attendance criteria and appearance in the examination, mode of examination, etc.), the student has to abide by the instructions of the Programme coordinator/examination section/academic office and the rules of the GIPE.
- The Rector and Campus Secretary have the discretion to inspect any room at any time.

- Resident students must vacate their rooms within a week after completion of the semester-end examination of the second and fourth semesters and hand over the room keys to the authorised official.
- The inmates shall be responsible for the hostel property in their charge. They shall be required to pay the cost of repairs in case of damage caused by them to the furniture, electric fittings or the building, painting etc., whether intentionally or otherwise. Damages of any kind to the properties of the hostel rooms, buildings, and Mess, furniture, and equipment, etc., due to mischievous behaviour from the students will be recovered from the Caution Money Deposit, and if the damage is more than the amount available in this deposit, it may be recovered from the students separately by issuance of proper notices. In any of the cases, Caution Money will not be refunded to the student after completion of the course and on non-payment of damage costs, the clearance of the course will be held up depending upon the decision of the authorities of the institute.
- The Hostel authority reserves the right to terminate the occupancy of the student for any willful disobedience or defiance of authority, non-observance or frequent violation of hostel rules, causing damage to person or property or indulging in anti-national or undesirable activities. In such cases, the deposit shall be forfeited, and fees will NOT be refunded.





## ■ Amendment and Interpretation of Rules

The institute may alter, suspend, and/or amend any of these regulations at any time without prior notice. Students are deemed to have read these rules and regulations and to have agreed to be bound by them, including any changes that may be made therein, from time to time.

**Duration of stay in Hostel: 10 months (July to May)**

## ■ Address and Contact Details of the Hostel Office

Gokhale Institute Staff Quarters and Hostel, 832B, Agarkar Road (BMCC Road), Deccan Gymkhana, Shivajinagar, Pune, Maharashtra 411004

Geolocation: 18.521607638756443, 73.83203206931921

**Email:** hostels@gipe.ac.in

**Contact.:** 020-2568339







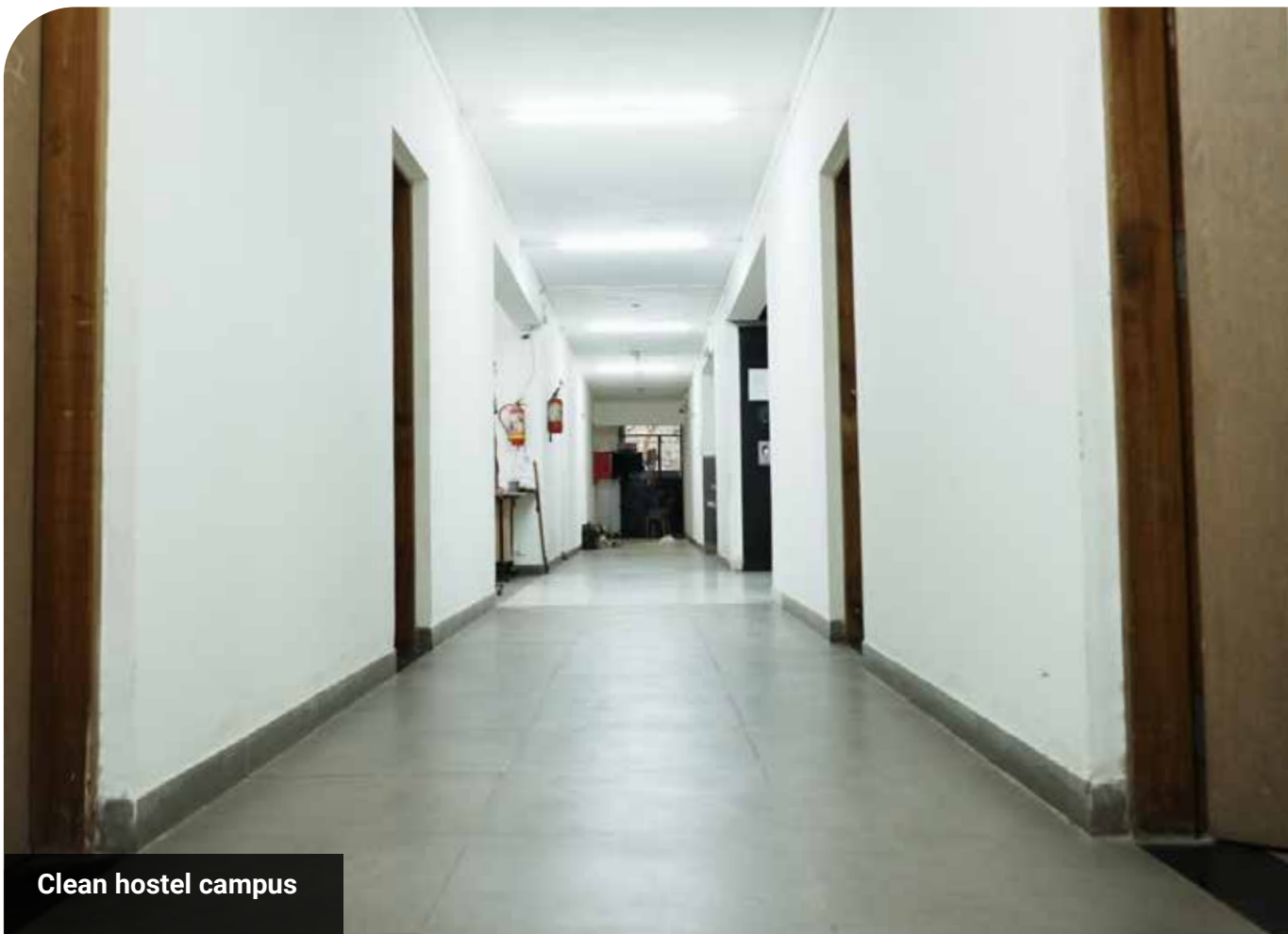
Life at  
**Gokhale Institute**

## Facilities for students and student-led activities

Nestled on an environmentally friendly, clean campus, the Gokhale Institute of Politics and Economics provides comfortable hostel facilities for students from different regions of the country and abroad. The institute offers separate hostels for boys and girls, ensuring a safe and inclusive living environment.

The hostels feature well-furnished rooms, hygienic dining facilities, high-speed internet access, a well-equipped gymnasium, and a dedicated library to support academic pursuits. Round-the-clock security services further ensure students' safety and provide peace of mind. These facilities collectively create a supportive residential ecosystem that promotes discipline, well-being, and vibrant student life beyond the classroom.

A visual tour is as follows -



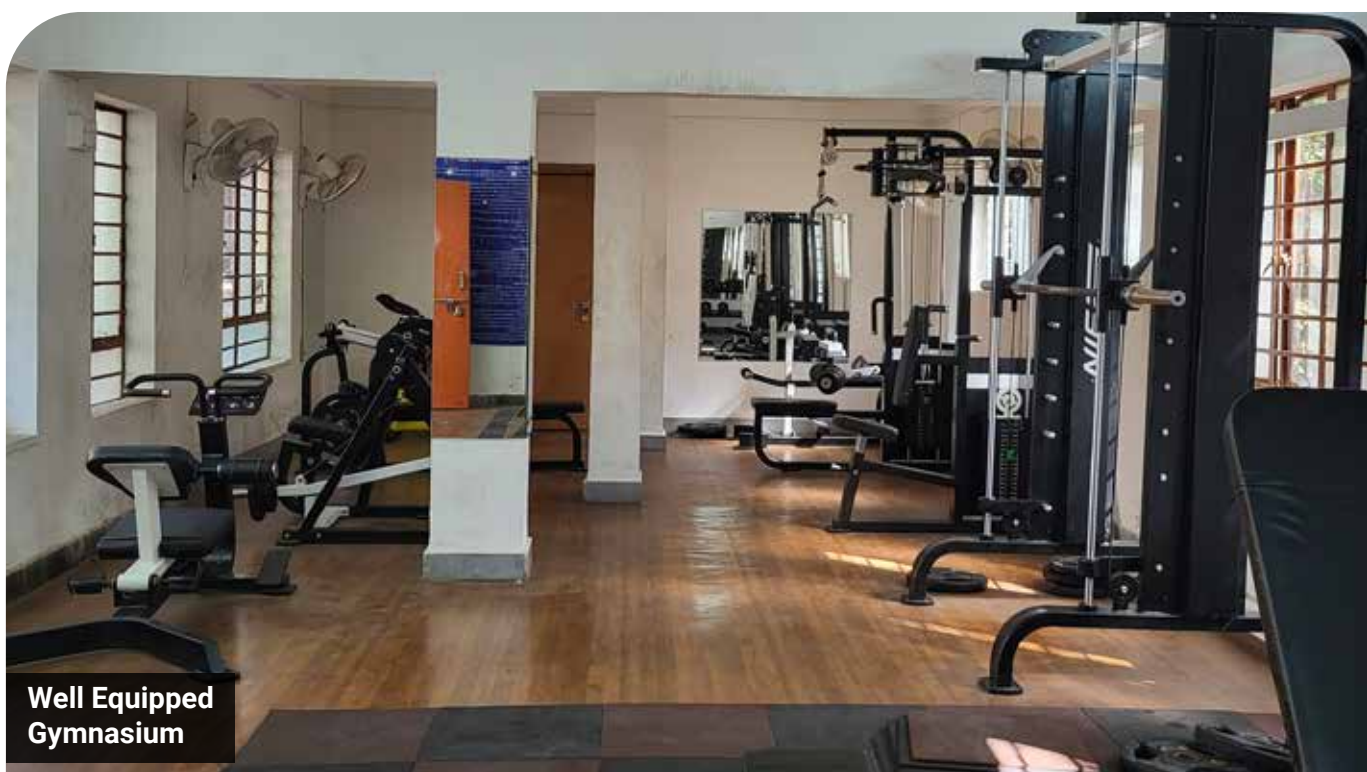
Clean hostel campus



**Girls Hostel**



**Boys Hostel**



**Well Equipped  
Gymnasium**



**Table Tennis Hall**

## Health, Counseling, and Support Services

Under the Student's Welfare framework of the Institute, medical and wellness support is given the utmost priority. The campus is equipped with basic health facilities and first-aid services to address immediate medical requirements. In addition, the institute has tie-ups with nearby hospitals and qualified medical professionals to ensure timely and comprehensive healthcare during emergencies. Counselling and support services are also made available to help students manage academic pressure, personal concerns, and emotional well-being. Regular health awareness initiatives, guidance sessions, and a supportive campus environment collectively ensure that the students feel secure, cared for, and mentally and physically prepared to pursue their academic goals.



Health Centre, which is also the seat for the counsellor.

The Gokhale Institute also offers dedicated counselling services to address the mental health needs of students, supporting their emotional well-being and fostering holistic growth essential for professional development. These services help students manage academic stress, personal challenges, and overall wellness in a supportive environment. In addition, the Institute has a well-established Placement Office located within the main campus. The office functions under the guidance and supervision of a committed team of faculty members, ensuring structured career support, skill development, and effective placement assistance to prepare students for diverse professional opportunities.

**Student-led Committees of Gokhale Institute** - The pride of the Gokhale Institute lies in its vibrant student-led committees that actively organise events, celebrations, and commemorative days across the campus. These committees play a crucial role in nurturing creativity, leadership, and a strong sense of community among students. The Institute's cultural centres, auditoriums, and student activity clubs provide dynamic platforms for participation in arts, music, drama, debates, sports, and other multifaceted pursuits. Engagement in such activities enables students to develop essential skills such as teamwork, leadership, coordination, and event management, while also serving as an effective cushion against the pressures of the rigorous academic standards.

Committees such as the *Alumni Committee, Manan, Sports Committee, Adah, Music, Equilibria, DYU, 8:10 Newsletter, DARBAAR, Evolve: Consulting Cell, and Cultural Committee* significantly enrich campus life and contribute to the holistic development of students.

A visual tour of some of the Committees are -







Gokhale Institute emphasize a holistic growth of a student in compliance with the vision of NEP, 2020. The activities through the vibrant student committees play a crucial role in balancing the rigour of high academic standards. These committees thus provide students with a much-needed platform to de-stress, rejuvenate, and develop a sense of belonging beyond classrooms and examinations. Through activities like sports, seminars, debates, conclave, conferences, arts, competitions, puzzles, policy discussions, hackathons, flea markets, cultural magazines, students are encouraged to explore their passions, creativity, and talents outside academics. Some of these student-driven activities are – TEDxGipe, ArthChakra, Arohan, Mannan, etc.

Active participation nurtures teamwork, emotional resilience, confidence, and time-management skills, which are essential for the holistic development of the students. Such engagement not only enhances mental well-being but also shapes socially responsible, well-rounded individuals prepared to face real-world challenges with empathy and enthusiasm.



## Fee details

**Important Instructions:** All the students wishing to take the admission after their final selection for a course, they have to check their financial transaction limits of the Debit/Credit cards before processing for the payment. If a limit for the transaction is less than Rs. 50,000/-, Students/Parents need to increase the limit that is equal to fee amount from the bank for that specific period for deposition of fees to avoid failure of transactions.

### Annex I: Fee Structure for PG Programme

Please read the instructions

1. Library Deposit is refundable after completion of the programme.
2. Identity Card fees will be collected during 1st year only. In case of misplacement or damage  
If any, for issuance of a new card, Rs. 2220/- will be charged separately.
3. Alumni Association Membership Fund is non-refundable and will be collected during the 1st year at the time of seeking admission. However, it is refundable to students who wish to cancel their admission during the scheduled time, as per the prescribed guidelines. For other students who continue with the admission for the full programme, it is non-refundable.
4. Refund on cancellation of admission as per UGC Notification / Guidelines
5. Updated the fee structure w.e.f. 01.04.2026. This fee structure supersedes all previous notifications on the subject.

**Disclaimer: Fees are subject to change; students will be informed periodically.**

### M.A. Economics 1st Year Year 2026-2027 Batch 2026-2028

Particulars	Open & OBC Categories	SC/ST/DTNT & VJNT Categories
	Amount (Rs.)	Amount (Rs.)
<b>A. PROGRAMME FEES (Per Annum)</b>		
(i) Admission Fees	12,500.00	12,500.00
(ii) Tuition Fees	98,800.00	-
(iii) Other Fees	44,700.00	39,500.00
<b>TOTAL PROGRAMME FEES (A) (i), (ii) and (iii)</b>	<b>1,56,000.00</b>	<b>52,000.00</b>
<b>B. DEPOSITS (Refundable)</b>		
Library Deposit	2,000.00	2,000.00
<b>TOTAL (B)</b>	<b>2,000.00</b>	<b>2,000.00</b>
<b>GRAND TOTAL (A+B)</b>	<b>1,58,000.00</b>	<b>54,000.00</b>

**M.Sc. Economics (Agribusiness Economics) and  
M.Sc. Economics (Population Studies and Health Economics):  
First Year (Indian and SAARC Students)  
Year 2026-27 Batch 2026-2028**

Particulars	All Categories Amount (Rs.)
<b>A. PROGRAMME FEES (Per Annum)</b>	
(i) Admission Fees	12500
(ii) Tuition Fees	159800
(iii) Other Fees	44700
<b>TOTAL (A) (i), (ii) and (iii)</b>	<b>2,17,000</b>
<b>B. DEPOSITS</b>	
Library Deposit (Refundable)	2000
<b>TOTAL DEPOSITS (B)</b>	<b>2000</b>
<b>GRAND TOTAL (A+B)</b>	<b>2,19,000</b>

**M.Sc. Economics, M.Sc. Economics (Financial Economics),  
M.Sc. Economics (International Business Economics & Finance),  
M.Sc. Economics (Geo-Politics and Geo-Economics) and  
M.Sc. Economics (Public Policy):  
First Year (Indian and SAARC Students)  
Year 2026-2027 Batch 2026-2028**

Particulars	All Categories Amount (Rs.)
<b>A. PROGRAMME FEES (Per Annum)</b>	
(i) Admission Fees	12500.00
(ii) Tuition Fees	240800.00
(iii) Other Fees	44700.00
<b>TOTAL (A) (i), (ii) and (iii)</b>	<b>2,98,000.00</b>
<b>B. DEPOSITS</b>	
Library Deposit (Refundable)	2000.00
<b>TOTAL DEPOSITS (B)</b>	<b>2000.00</b>
<b>GRAND TOTAL (A+B)</b>	<b>3,00,000.00</b>



**All PG Programme: First Year (International Students)  
Year 2026-2027 Batch 2026-2028**

Particulars	Amount (Rs.)
<b>A. ADMISSION FEES</b>	<b>3,43,760.00</b>
<b>B. PROGRAMME FEES (Per Annum)</b>	
(i) Tuition Fees	2,41,320.00
(ii) Other Fees	50,920.00
<b>TOTAL (B) (i) and (ii)</b>	<b>6,36,000.00</b>
<b>C. DEPOSITS</b>	
Library Deposit (Refundable)	4,000.00
<b>TOTAL (D)</b>	<b>4,000.00</b>
<b>GRAND TOTAL (B+C)</b>	<b>6,40,000.00</b>

**■ Annex II: Fee Structure for UG Admission ■  
B.Sc. Economics & B.Sc. Economics (Data Science) -  
First Year (Indian and SAARC Students)  
Year 2026-2027 Batch 2026-2028**

Particulars	All Categories Amount (Rs.)
<b>A. PROGRAMME FEES (Per Annum)</b>	
(i) Admission Fees	12,500.00
(ii) Tuition Fees	1,68,800.00
(iii) Other Fees	44,700.00
<b>TOTAL PROGRAMME FEES (A) (i), (ii) and (iii)</b>	<b>2,26,000.00</b>
<b>B. DEPOSITS</b>	
Library Deposit (Refundable)	2,000.00
<b>TOTAL DEPOSITS (B)</b>	<b>2,000.00</b>
<b>GRAND TOTAL (A+B)</b>	<b>2,28,000.00</b>

**B.Sc. Economics & B.Sc. Economics (Data Science)  
(International Students)  
Year 2026-2027 Batch 2026-2028**

Particulars	All Categories Amount (Rs.)
<b>A. PROGRAMME FEES (Per Annum)</b>	
(i) Admission Fees	40,580.00
(ii) Tuition Fees	3,63,720.00
(iii) Other Fees	44,700.00
<b>TOTAL PROGRAMME FEES (A) (i), (ii) and (iii)</b>	<b>4,49,000.00</b>
<b>B. DEPOSITS</b>	
Library Deposit (Refundable)	4,000.00
<b>TOTAL DEPOSITS (B)</b>	<b>4,000.00</b>
<b>GRAND TOTAL (A+B)</b>	<b>4,53,000.00</b>

### ■ Annex III: Fee Structure for Hostel Admission

Please read the instructions

1. Hostel Fees Payable in advance, subject to availability of hostel accommodation. Mess facility is compulsory for Students.
2. Caution Money Deposit Additional Rs. 14000/- is refundable after completion of the Programme.
3. Instalment in Hostel Fees is not admissible.
4. Refund of Hostel Fees upon cancellation will be done as per the Institute's rules.
5. Pro-rata fees are not applicable irrespective of the date of admission on the later date.
6. Students who did not take admission in the first year but want to use the hostel in the Second Year must show their hostel room allocation receipt and pay the additional deposit of Rs 14000/-
7. **Disclaimer: Updated hostel fee structure w.e.f. 01.04.2026. Hostel fees are subject to change; students will be informed from time to time.**
8. \* **Hostel Mess charges are subject to change.**



## Hostel & Other Fees, Deposits & Mess charges for UG and PG First Year Students (Indian & SAARC Students) 2026-2027

Particulars	All Categories Amount (Rs.)
<b>A. HOSTEL FEES (Per Annum)</b>	
Hostel Admission	7,450.00
Hostel Room Charges	52,550.00
Security Charges	9,000.00
Washing Charges	16,200.00
Electricity Charges	13,800.00
<b>TOTAL (A)</b>	<b>99,000.00</b>
<b>B. DEPOSITS (Refundable)</b>	
Caution Money Deposit	14,000.00
<b>TOTAL (B)</b>	<b>14,000.00</b>
<b>TOTAL (A+B)</b>	<b>1,13,000.00</b>
<b>C. HOSTEL MESS CHARGES *</b>	<b>60,000.00</b>
<b>GRAND TOTAL (A+B+C)</b>	<b>1,73,000.00</b>



## Hostel & Other Fees, Deposits & Mess charges for UG and PG First Year Students (International Students) 2026-2027

Particulars	All Categories Amount (Rs.)
<b>A. HOSTEL FEES (Per Annum)</b>	
Hostel Admission Fees	13,200.00
Hostel Room Charges	74,800.00
Security Charges	9,000.00
Washing Charges	16,200.00
Electricity Charges	13,800.00
<b>TOTAL (A)</b>	<b>1,27,000.00</b>
<b>B. DEPOSITS (Refundable)</b>	
Caution Money Deposit	14,000.00
<b>TOTAL (B)</b>	<b>14,000.00</b>
<b>TOTAL (A+B)</b>	<b>1,41,000.00</b>
<b>C. HOSTEL MESS CHARGES *</b>	<b>60,000.00</b>
<b>GRAND TOTAL (A+B+C)</b>	<b>2,01,000.00</b>



## ■ ANNEX IV: Educational Loan Assistance

### STUDENT EDUCATIONAL LOAN ASSISTANCE FROM BANKERS

Gokhale Institute of Politics & Economics (GIPE) also supports students in availing Educational Loans from various bankers at affordable/comparative interest rates, with multiple options to repay instalments over a longer tenure for tuition & other fees, along with Hostel Fees, as per the requirement.

In this context, Students / Parents can contact the bankers as per the details given below:

Sr.	Name of the Bank	Name of the Representative / Contact Person	Mobile No.	Email id
1	<b>Bank of Maharashtra,</b> Deccan Gymkhana Branch, 1257 Pawar Building, J M Road, Shivajinagar, Pune	Shri Abhinav Jaiswal	8999215408	bdo_pcr@mahabank.co.in bom3@mahabank.co.in
		Shri Pravin Nalawade	8888969602	
2	<b>HDFC Bank Ltd,</b> Bhandarkar Road Branch, Band Garden Road Branch, Pune	Shri Paresh Thite	8600157763	Paresh.thite@in.hdfcbank.com
		Shri Sushant Sonone	9890675410	Sushant.sonone@hdfcbank.com
3	<b>State Bank of India,</b> Deccan Gymkhana, Senapati Bapat Road & SBI RBO Pune West Branch, Pune	Smt. Vishakha Patil, Branch Manager – SB Road Branch	9819574995	sbi.04120@sbi.co.in
		Shri Sushant Walke, Support Officer, SBI RBO Pune West Branch	7875551799	cmcredit.rbopunewest@sbi.co.in

However, in no case GIPE will be responsible or remain guarantor for the repayment of either instalments or interest or any type of outstanding amounts for the students. Students and their parents/ guardians can complete the documentation formalities with the respective bankers of their choice independently.

GIPE will provide the fee structure as per the requirements of the students. This fee structure will be PROVISIONAL / INDICATIVE (subject to vary as per the rules and regulations of the institute). For enabling the students to make the initial application with the bankers, the provisional fee structure will be provided.

Students are required to pay the difference of fee amounts due to revisions if any during the next years from the fees being declared by the institute and the actual amount sanctioned by the banks.

To check note to be added or no - Institute may provide grace period of 5 to 7 days to the students for deposition of fees for getting the loans approved from banks. (this note to be kept or know to be checked with HOI/policy decision)





---

## **ANNEX IV Undertaking Forms**

---

### **UNDERTAKING -A**

"I hereby declare that, during the academic year 2025-26, I have not taken admission to a degree or postgraduate degree of this or any other university OR I have taken admission for a degree programme at a University/ Institute in Regular/Distance learning mode\*. The admission is as per the UGC rules in vogue.

\*Please strike out non-applicable parts.

Date:

Place:

Signature  
(Name of the candidate)

**UNDERTAKING – B**  
**REGISTER THEIR NAMES IN ELECTORAL ROLL**

On date,....., I have completed or going to complete 18 years of age. I promise to register my name in the electoral roll as soon as I complete 18 years of age. For that, I am submitting downloaded specimen forms duly completed in all respect at the study centre.

Date:  
Place:

Signature  
(Name of the candidate)

---

Student can download these format by clicking this link:  
<https://ceo.maharashtra.gov.in/Downloads/Forms.aspx>

---

Servants of India Society's  
**Gokhale Institute of Politics and Economics, Pune**



**Gokhale Institute  
of Politics and  
Economics**  
(Deemed to be University)

**Kindly visit the website [www.gipe.ac.in](http://www.gipe.ac.in) for detailed syllabus of each programme and other details**

Contact Details:

**Gokhale Institute of Politics and Economics**

(Deemed to be University u/s 3 of the UGC Act, 1956) BMCC Road,  
Deccan Gymkhana, Pune 411 004

**For any query, write to us: [admission@gipe.ac.in](mailto:admission@gipe.ac.in) Contact no:  
020- 25683384/85/87/88**